

Cladding and Screening Maintenance Guidelines

Oil or stain finish

If timber is coated with pigmented Protector wood oil or stain it will:

- Help to maintain and enhance colour for longer.
- Reduce surface cracking (checking).
- Improve stability (reduce expansion and contraction).
- Increase lifespan.
- Reduce the chance of surface mould.

Surface checking

Checking (cracks) may be observed on the face and ends of Vulcan and Tundra Cladding. Checks are acceptable to install. Checking may become more apparent as the material weathers naturally in place. Fibre pull at laminated glue lines is also possible. These are not defects and are considered a natural part of this wood product. Maintenance with a coating and thorough sealing of end grains with wax sealer will improve long term weathering characteristics.

Tundra



Face check

Vulcan



Laminated glue seams

Face check

Carefully Crafted Timber

Things to expect

- Fading/change in colour over time with exposure to the weather.
- Coated wood will begin to go grey after about 24 months of exposure to the weather if it is not re coated. Timber with no surface protection applied at all will tend to grey alot quicker usually within the first 9-12months.
- Cladding in south facing (northern hemisphere) or heavy weather-exposed aspects fade and age quicker than timber located in other aspects. Wet areas may darken and attract surface mould.
- Some movement of timber as it expands and contracts
- Possible minor surface cracking (checking).
- Possible 'fibre pull' splitting at the lamination glue lines.
- The surface may appear blotchy or dirty, this may be due to mould growth which can occur, especially in humid or wet environments.

Minimum maintenance

Cladding must be cleaned regularly (minimum every 12 months) with mild detergent. Wash and soft brush, rinse with water. For optimal coating performance (especially dark colours) apply a further coat of oil after 12 months weathering.

Note: High pressure water blasting is not allowed.

A maintenance assessment is required at least every two summers as follows:

- Clean the cladding.
- Apply 1 or 2 coats of Protector Oil or other penetrating stain according to coating manufacturer's recommendation as colour starts to fade. The regularity of re-coat will depend on the aspect of timber to the weather (typically between 2-4 years).

- Check all cladding, junctions, flashings, mouldings and replace or re-mediate as required to maintain weather tightness of the cladding system.

In the case of light mould or discolouration

Use Rejuvenator or other similar timber cleaner and a soft brush, rinse with water.

Apply 1 or 2 coats of pigmented Protector Oil or other penetrating stain as appropriate onto dry timber.

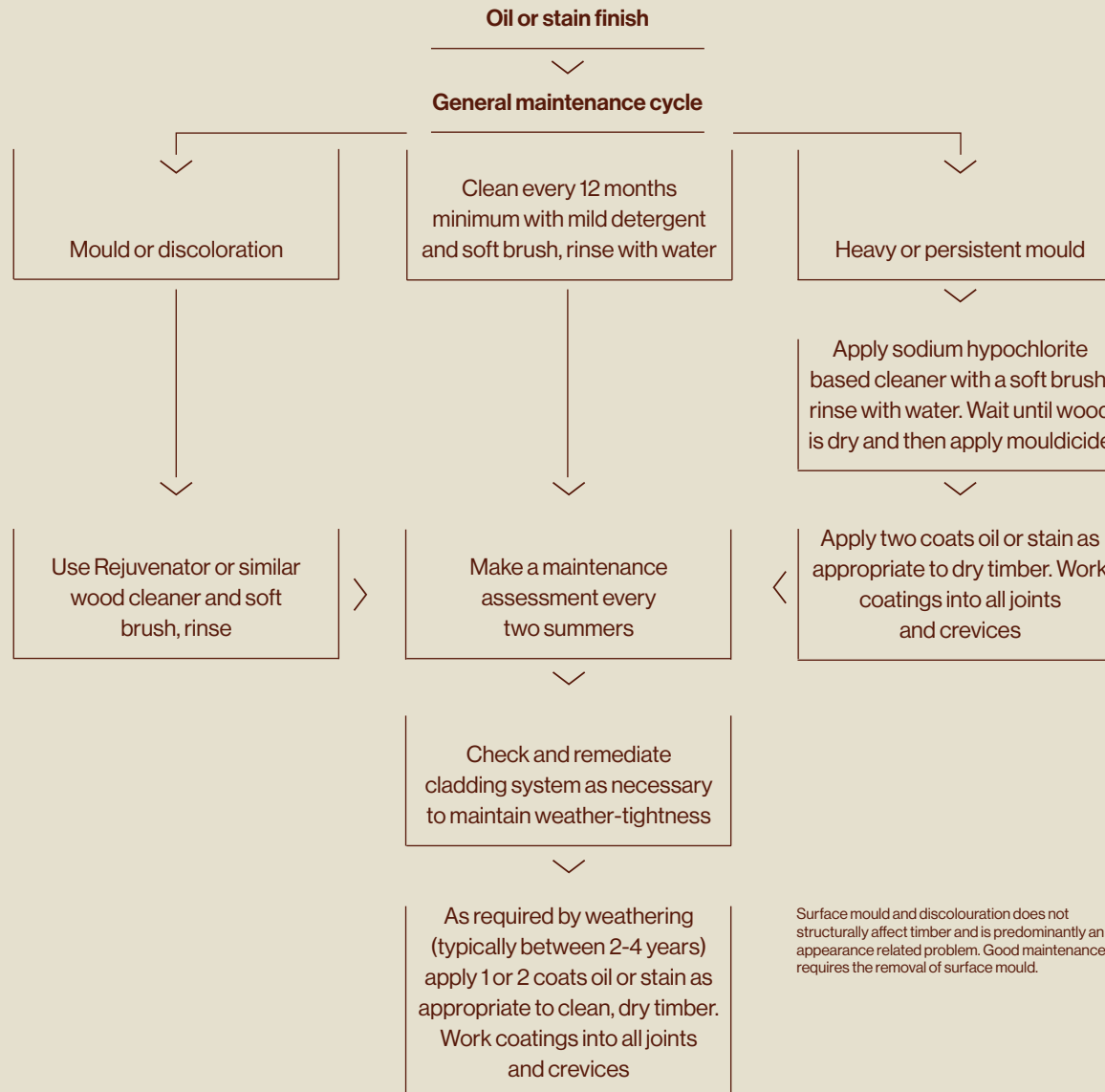
In the case of heavy and persistent mould

Use a sodium hypochlorite based cleaner, apply with a soft brush and leave for 10 minutes, then rinse thoroughly with water. Wait until wood is dry and then spray on mouldicide.

Apply 2 coats of Protector Oil or stain as appropriate onto dry timber.

Cladding and Screening Maintenance Guidelines

Oil or stain finish



Cladding and Screening Maintenance Guidelines

Paint finish

Things to expect:

- Cladding in south facing (northern hemisphere) or heavy weather-exposed aspects age quicker than timber located in other aspects.
- Some movement of timber as it expands and contracts.
- Possible minor surface cracking (checking).

Minimum maintenance:

Cladding must be cleaned regularly (minimum every 12 months) with mild detergent and soft brush, rinse with water.

Note: High pressure water blasting is not allowed.

A maintenance assessment is required at least every two summers as follows:

- a Sand back areas of cladding where flaking or cracking is occurring – filler, sand as appropriate – then spot prime and apply two coats of exterior paint as required.
- b Check all cladding, junctions, flashings, mouldings and replace or remediate parts as required to maintain weather tightness of the cladding system.
- c Re-coat the cladding with exterior paint as required by the coating manufacturer's recommendations (typically between 5 to 10 years). Be sure to work any coatings into joints.

Paint finish

General maintenance cycle

Clean every 12 months minimum with mild detergent and soft brush, rinse with water. Allow to dry before re-coating

Make a maintenance assessment every two summers. When dry

Check and remediate cladding system as necessary to maintain weather-tightness. Sand, fill, spot prime and paint areas where flaking or cracking

Re-paint approx every 5-10 years according to paint manufacturer's instructions

These are general are recommendations.
Please follow paint manufacturers own details and recommendations.

E info@abodowood.co.uk

W abodowood.co.uk