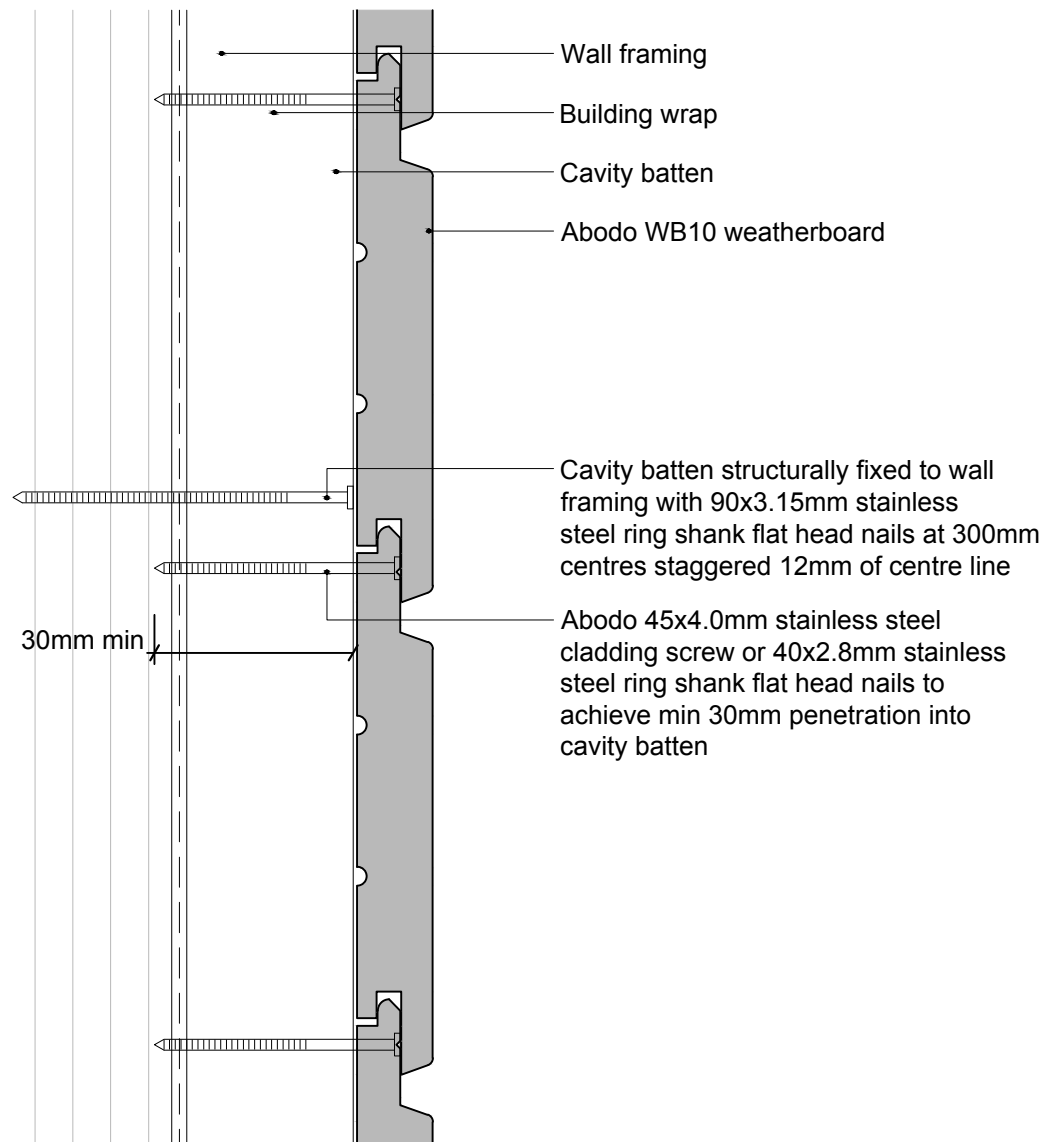


1. Weatherboards must be coated with at least one coat all sides prior to fixing.
2. Fixing points must be pre-drilled minimum 1mm smaller than the fastener.
3. Cut ends and exposed timber must be sealed with an approved coating or end seal.

Internal wall lining



Hector WB10 Horizontal Weatherboard
Structural 45x45mm Cavity Batten

Scale
1:2

Date
5/05/17



© 2017 Abodo Wood Ltd, PO Box 201136, Auckland Airport, 2150
Ph 64 9) 249 0100 Fx 64 9) 2490101
www.abodo.co.nz

Drawing No.
HH.C.F.15