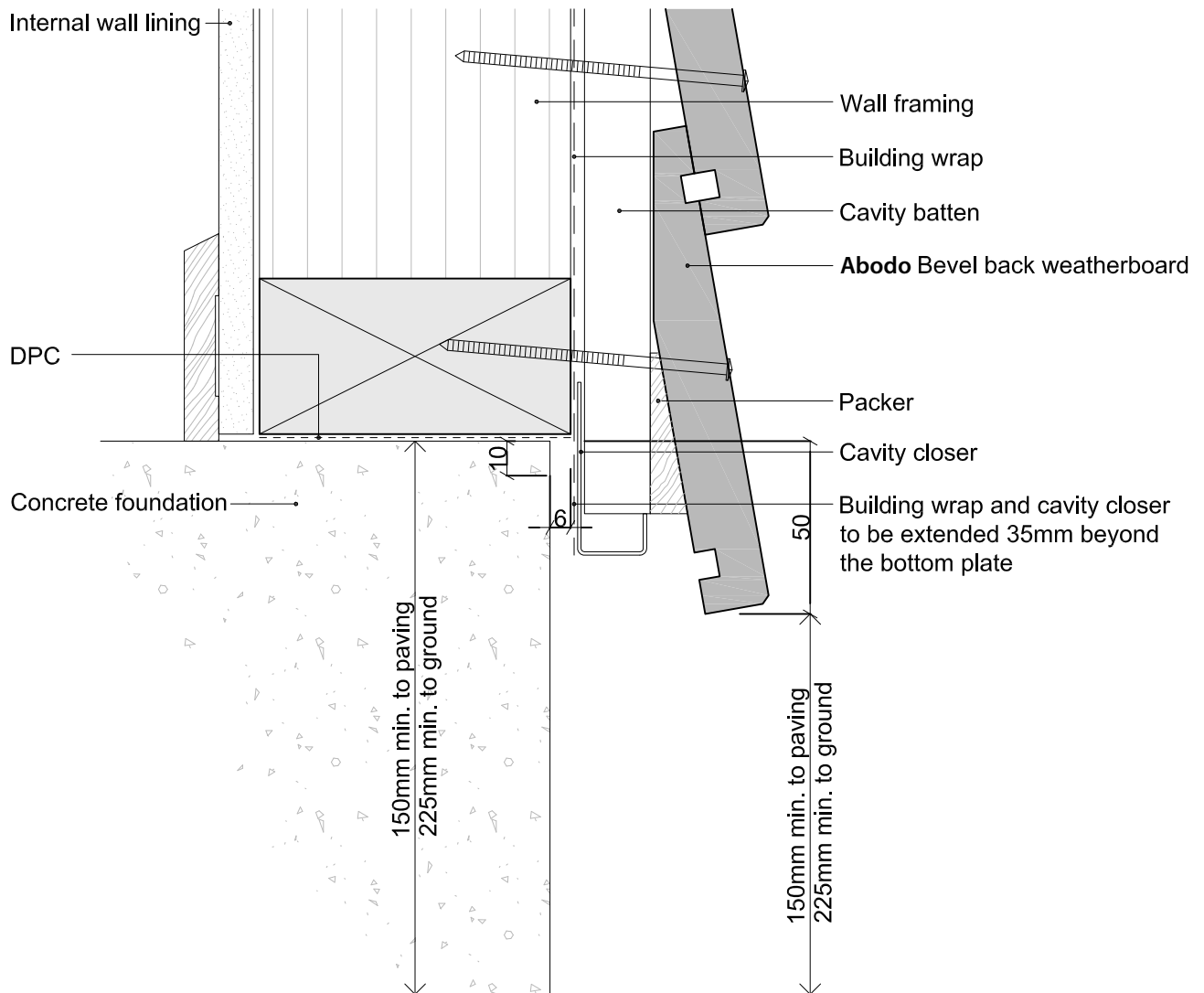


Bevel Back Weatherboard Details

- Flexible underlay

B.C.F.01	Base of Wall - Concrete Floor
B.C.F.02	Base of Wall - Timber Floor
B.C.F.11	Inter-Storey Cavity Junction
B.C.F.12	Packer Cavity Batten - Painted
B.C.F.13	Packer Cavity Batten - Stained
B.C.F.14	Structural Cavity Batten - Painted
B.C.F.15	Structural Cavity Batten - Stained
B.C.F.21	External 90° Corner - Boxed
B.C.F.22	External 90° Corner - Soakers
B.C.F.23	External 135° Corner - Soakers
B.C.F.31	Internal 90° Corner - Scribed & Notched
B.C.F.32	Internal 90° Corner - With Moulding
B.C.F.33	Internal 135° Corner - Scribed & Notched
B.C.F.41	Enclosed Deck - Concrete Substrate
B.C.F.42	Enclosed Deck - Timber Substrate
B.C.F.43	Parapet Balustrade Cap Flashing
B.C.F.44	Parapet Balustrade Intersection With Wall
B.C.F.51	Meter Box Head
B.C.F.52	Meter Box Jamb
B.C.F.53	Meter Box Sill
B.C.F.54	Pipe Penetration
B.C.F.55	Weatherboard Join
B.C.F.57	Apron Flashing
B.C.F.58	Roof Kick-out Flashing Cavity Detail
B.C.F.61	Top Of Wall - Flat Soffit
B.C.F.62	Top Of Wall No Soffit
B.C.F.63	Top Of Wall - Sloping Soffit
B.C.F.71	Window Head
B.C.F.72	Window Jamb
B.C.F.73	Window Sill

1. Weatherboards must be coated with at least one coat all sides prior to fixing.
2. Fixing points must be pre-drilled minimum 1mm smaller than the fastener.
3. Cut ends and exposed timber must be sealed with an approved coating or end seal.



Bevel Back Weatherboard

Base of Wall - Concrete Floor

Scale
1:2

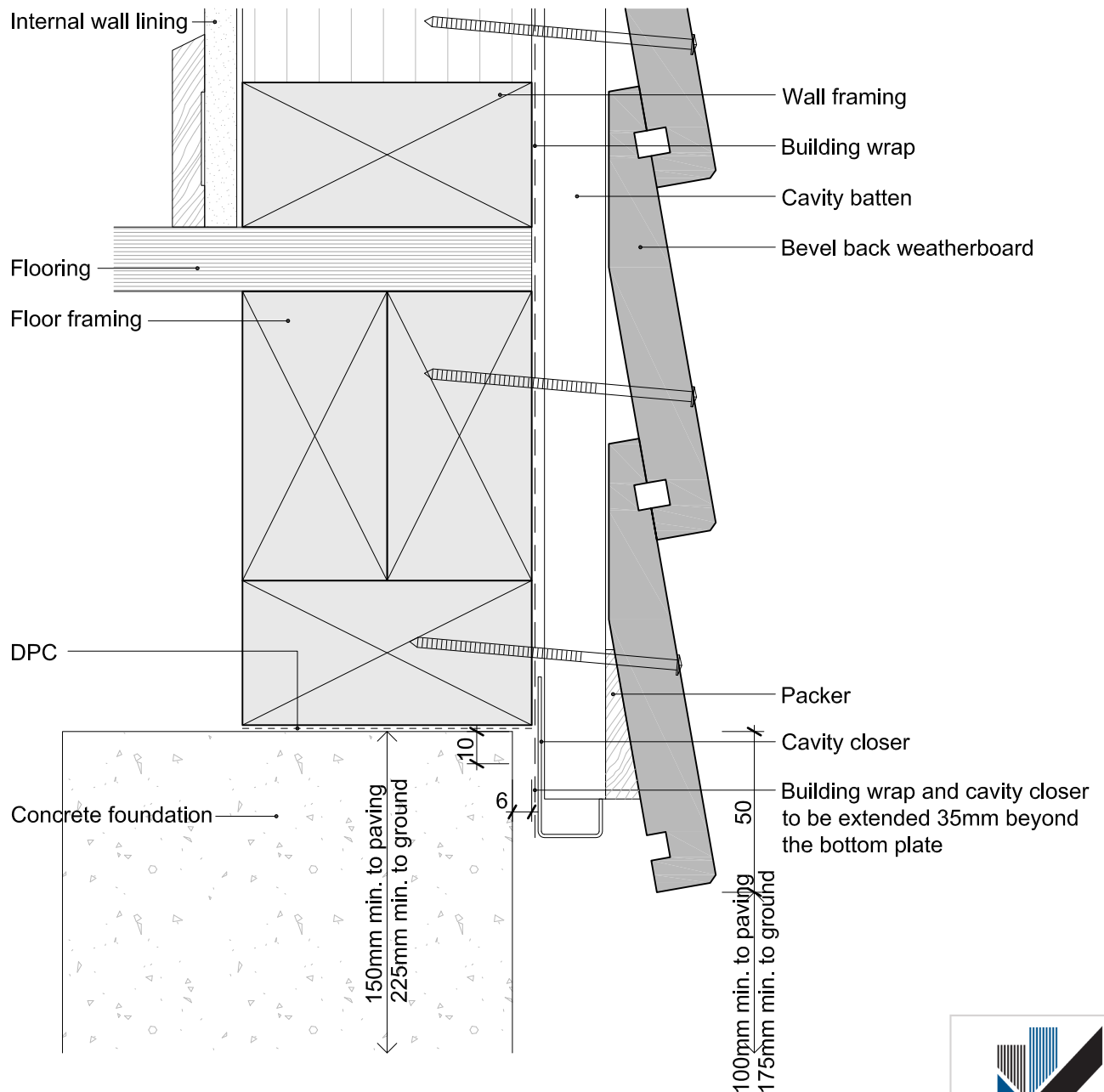
Date
08/12/14



© 2013 Abodo Wood Ltd, PO Box 8961, Symonds St, Auckland 1052
Ph 64 9) 302 9555 Fx 64 9) 302 9550
www.abodo.co.nz

Drawing No.
B.C.F.01

1. Weatherboards must be coated with at least one coat all sides prior to fixing.
2. Fixing points must be pre-drilled minimum 1mm smaller than the fastener.
3. Cut ends and exposed timber must be sealed with an approved coating or end seal.



Bevel Back Weatherboard

Base of Wall - Timber Floor

Scale
1:2

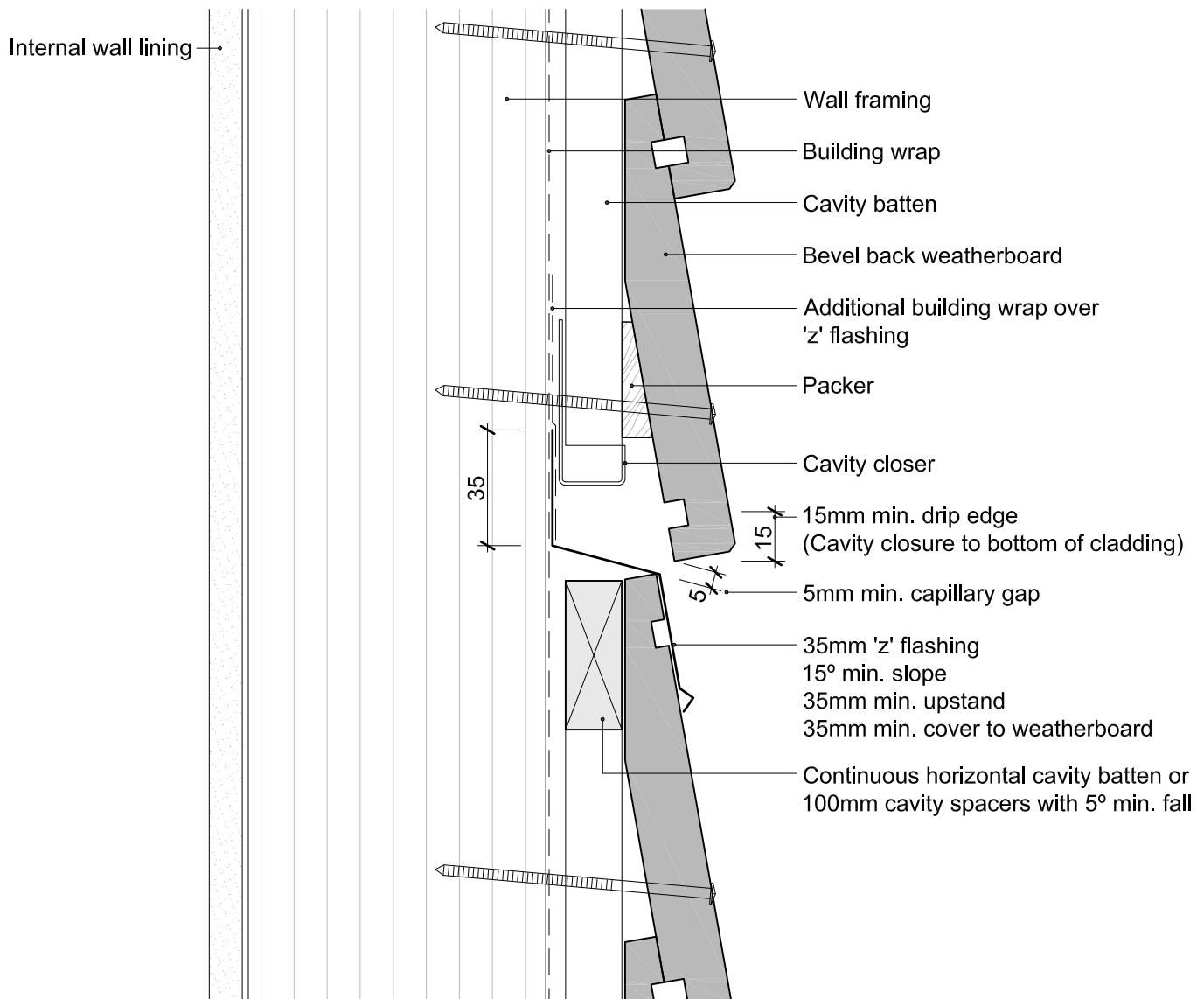
Date
08/12/14



© 2013 Abodo Wood Ltd, PO Box 8961, Symonds St, Auckland 1052
Ph 64 9) 302 9555 Fx 64 9) 302 9550
www.abodo.co.nz

Drawing No.
B.C.F.02

1. Weatherboards must be coated with at least one coat all sides prior to fixing.
2. Fixing points must be pre-drilled minimum 1mm smaller than the fastener.
3. Cut ends and exposed timber must be sealed with an approved coating or end seal.



Bevel Back Weatherboard

Inter-Storey Cavity Junction

Scale
1:2

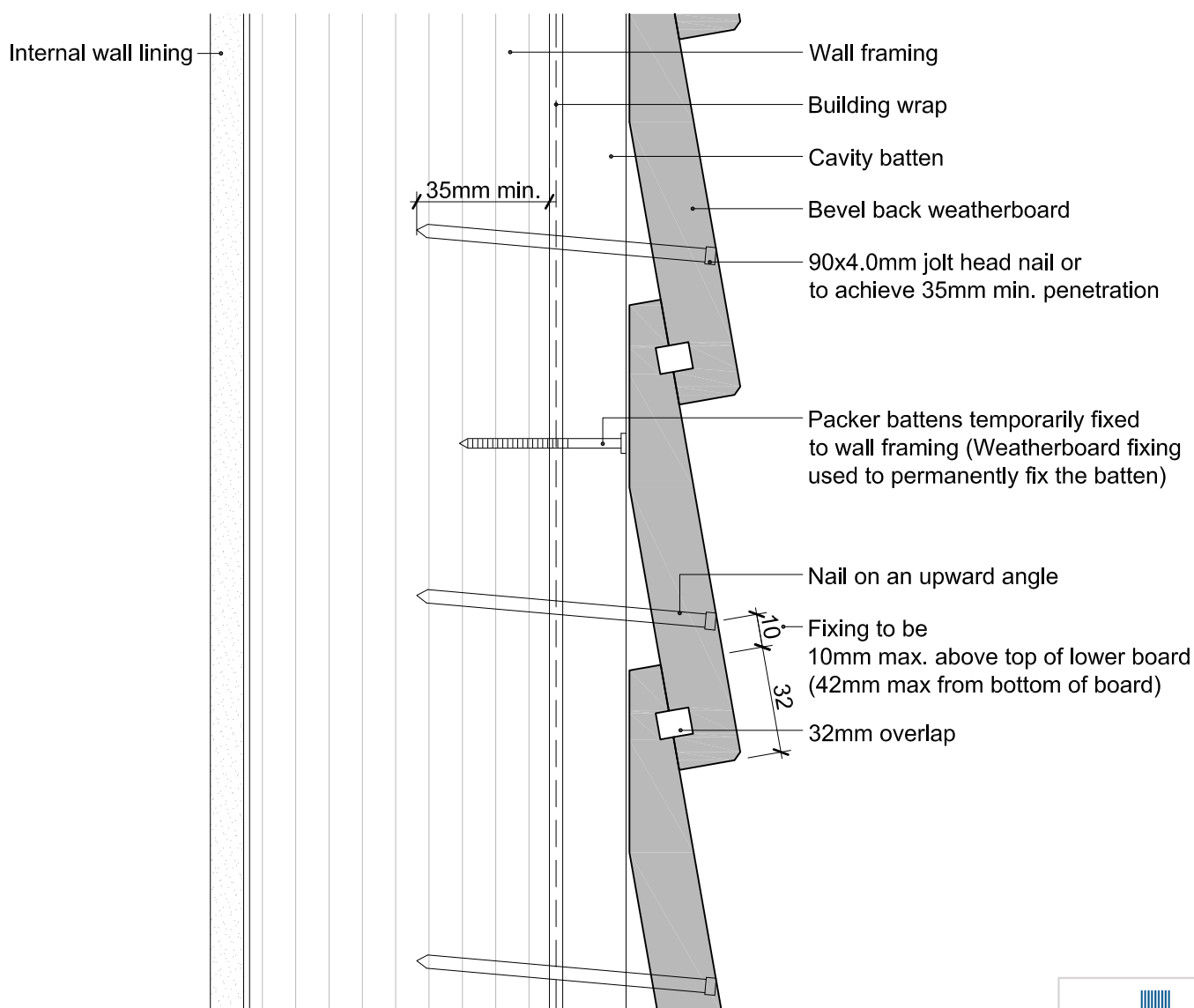
Date
27/09/14



© 2013 Abodo Wood Ltd, PO Box 8961, Symonds St, Auckland 1052
Ph 64 9) 302 9555 Fx 64 9) 302 9550
www.abodo.co.nz

Drawing No.
B.C.F.11

1. Weatherboards must be coated with at least one coat all sides prior to fixing.
2. Fixing points must be pre-drilled minimum 1mm smaller than the fastener.
3. Cut ends and exposed timber must be sealed with an approved coating or end seal.



Bevel Back Weatherboard

Packer Cavity Batten - Painted

Scale
1:2

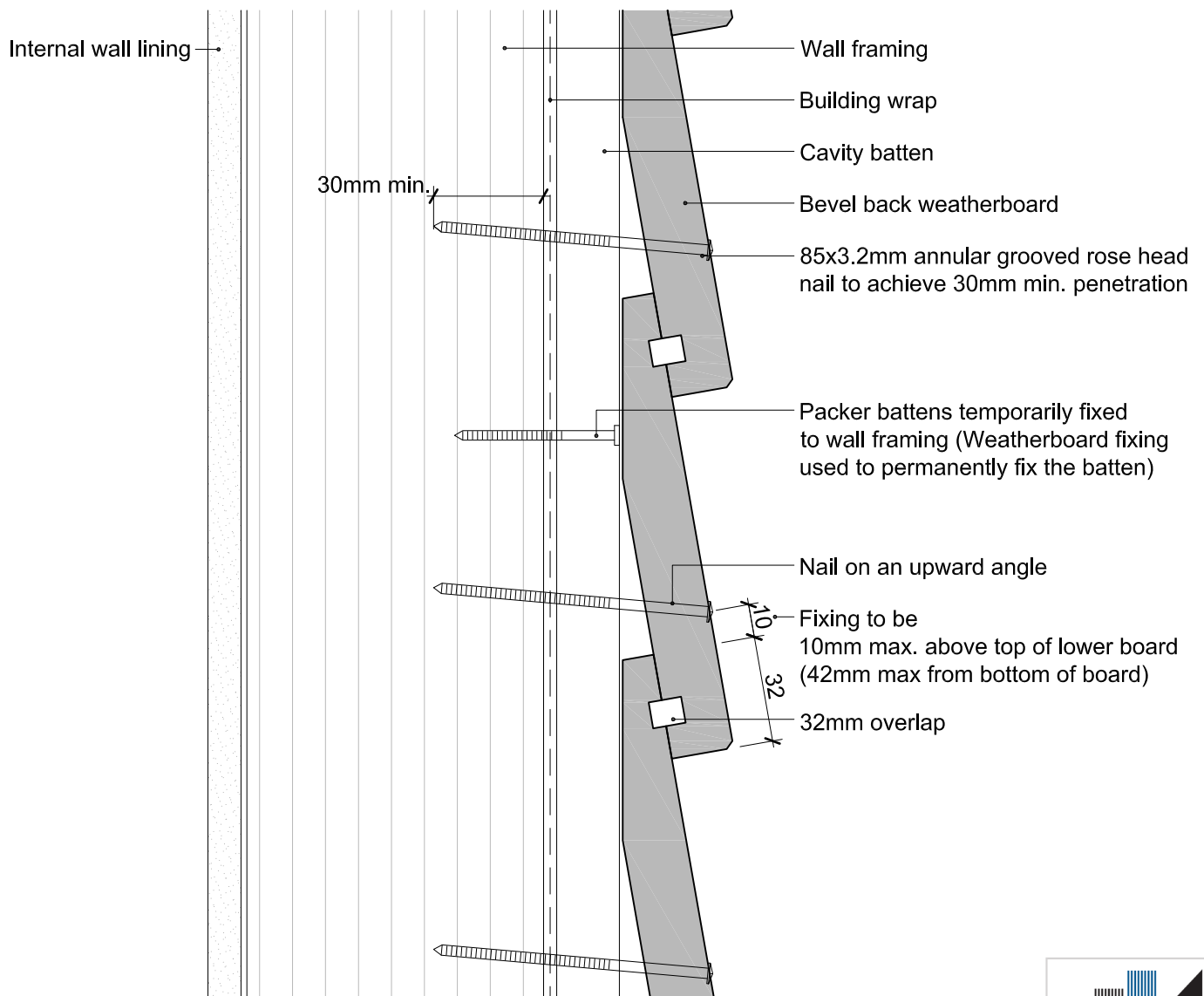
Date
3/10/13



© 2013 Abodo Wood Ltd, PO Box 8961, Symonds St, Auckland 1052
Ph 64 9) 302 9555 Fx 64 9) 302 9550
www.abodo.co.nz

Drawing No.
B.C.F.12

1. Weatherboards must be coated with at least one coat all sides prior to fixing.
2. Fixing points must be pre-drilled minimum 1mm smaller than the fastener.
3. Cut ends and exposed timber must be sealed with an approved coating or end seal.



Bevel Back Weatherboard

Packer Cavity Batten - Stained

Scale
1:2

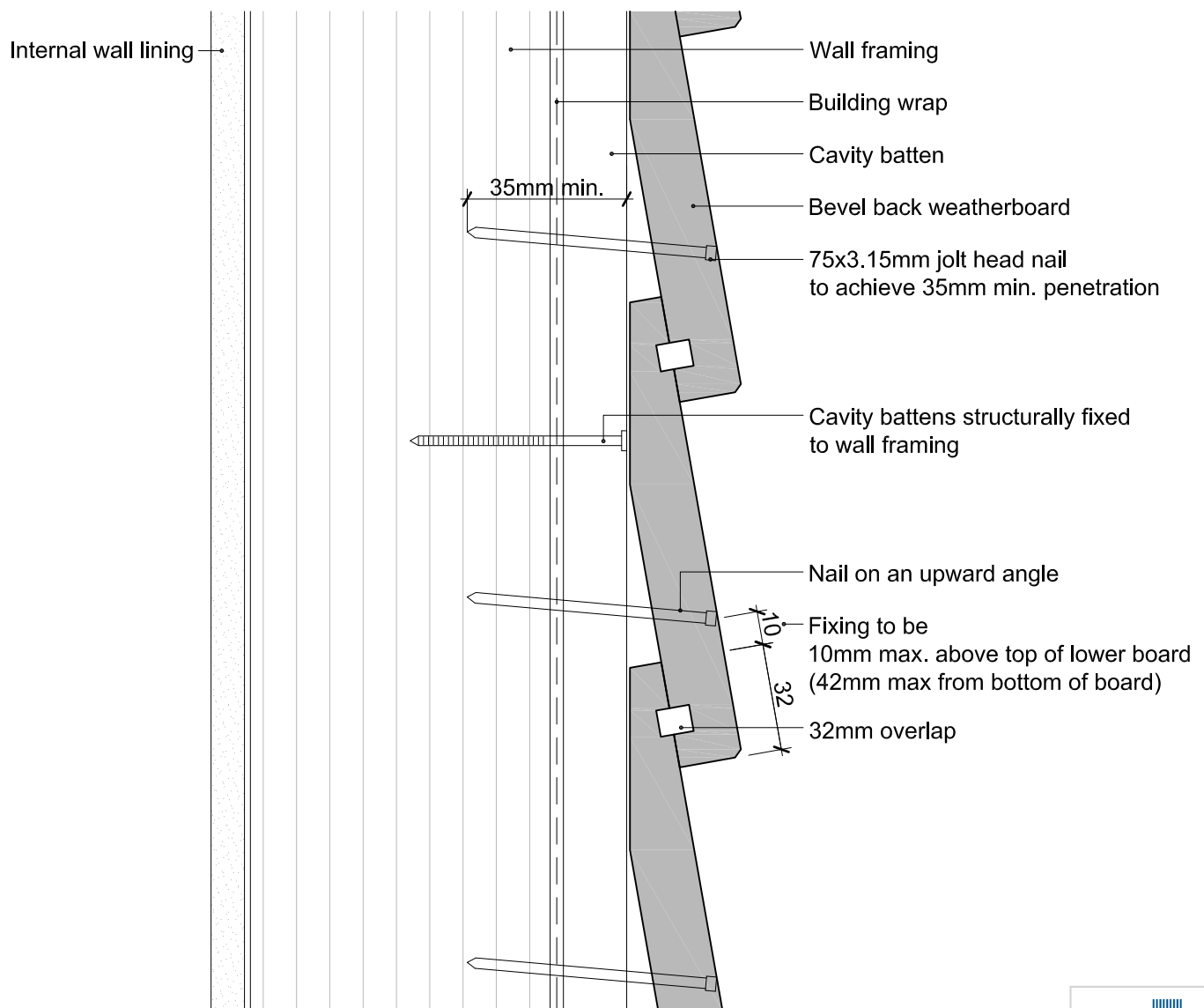
Date
3/10/13



© 2013 Abodo Wood Ltd, PO Box 8961, Symonds St, Auckland 1052
Ph 64 9) 302 9555 Fx 64 9) 302 9550
www.abodo.co.nz

Drawing No.
B.C.F.13

1. Weatherboards must be coated with at least one coat all sides prior to fixing.
2. Fixing points must be pre-drilled minimum 1mm smaller than the fastener.
3. Cut ends and exposed timber must be sealed with an approved coating or end seal.



Bevel Back Weatherboard

Structural Cavity Batten - Painted

Scale
1:2

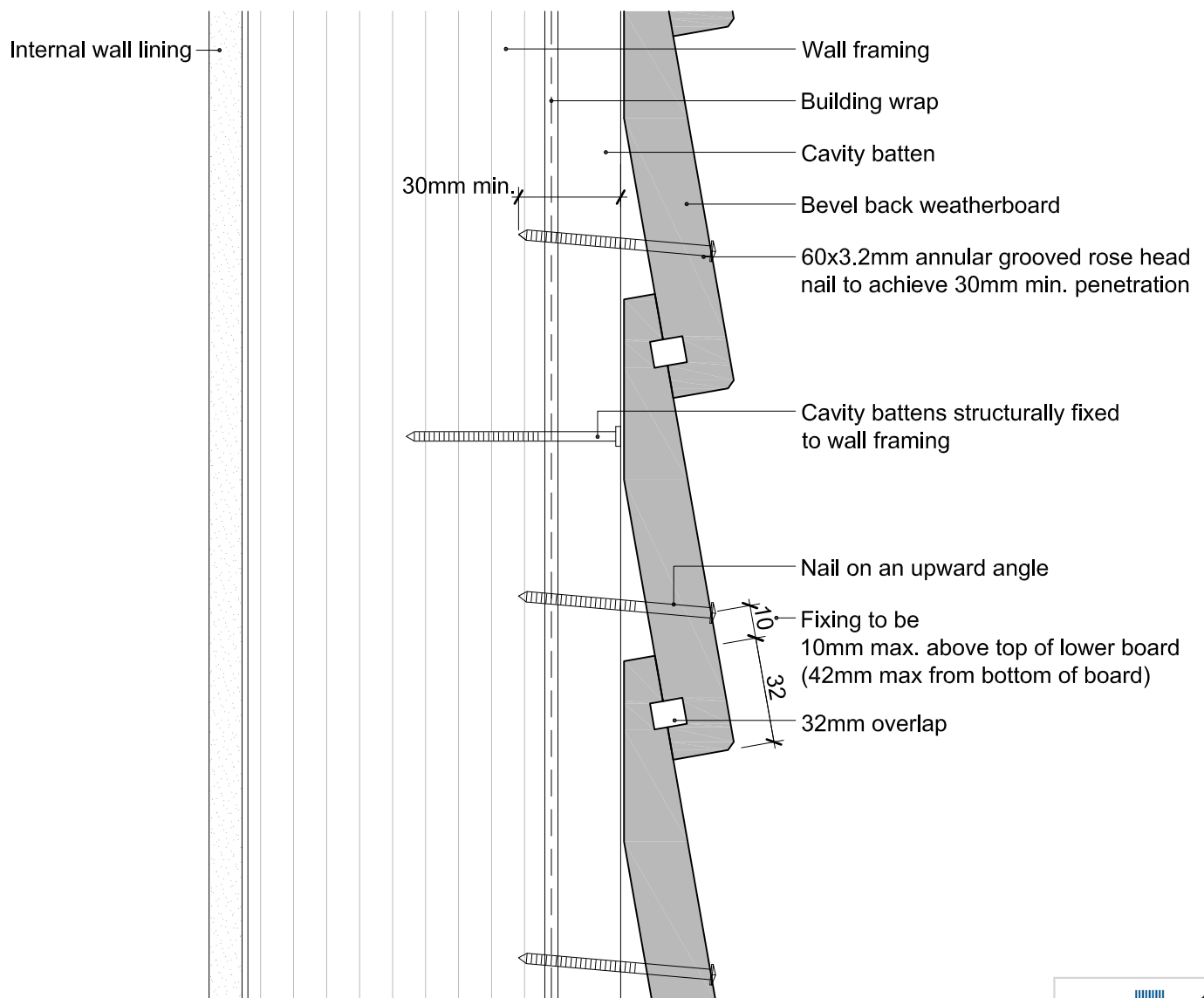
Date
3/10/13



© 2013 Abodo Wood Ltd, PO Box 8961, Symonds St, Auckland 1052
Ph 64 9) 302 9555 Fx 64 9) 302 9550
www.abodo.co.nz

Drawing No.
B.C.F.14

1. Weatherboards must be coated with at least one coat all sides prior to fixing.
2. Fixing points must be pre-drilled minimum 1mm smaller than the fastener.
3. Cut ends and exposed timber must be sealed with an approved coating or end seal.



Bevel Back Weatherboard

Structural Cavity Batten - Stained

Scale
1:2

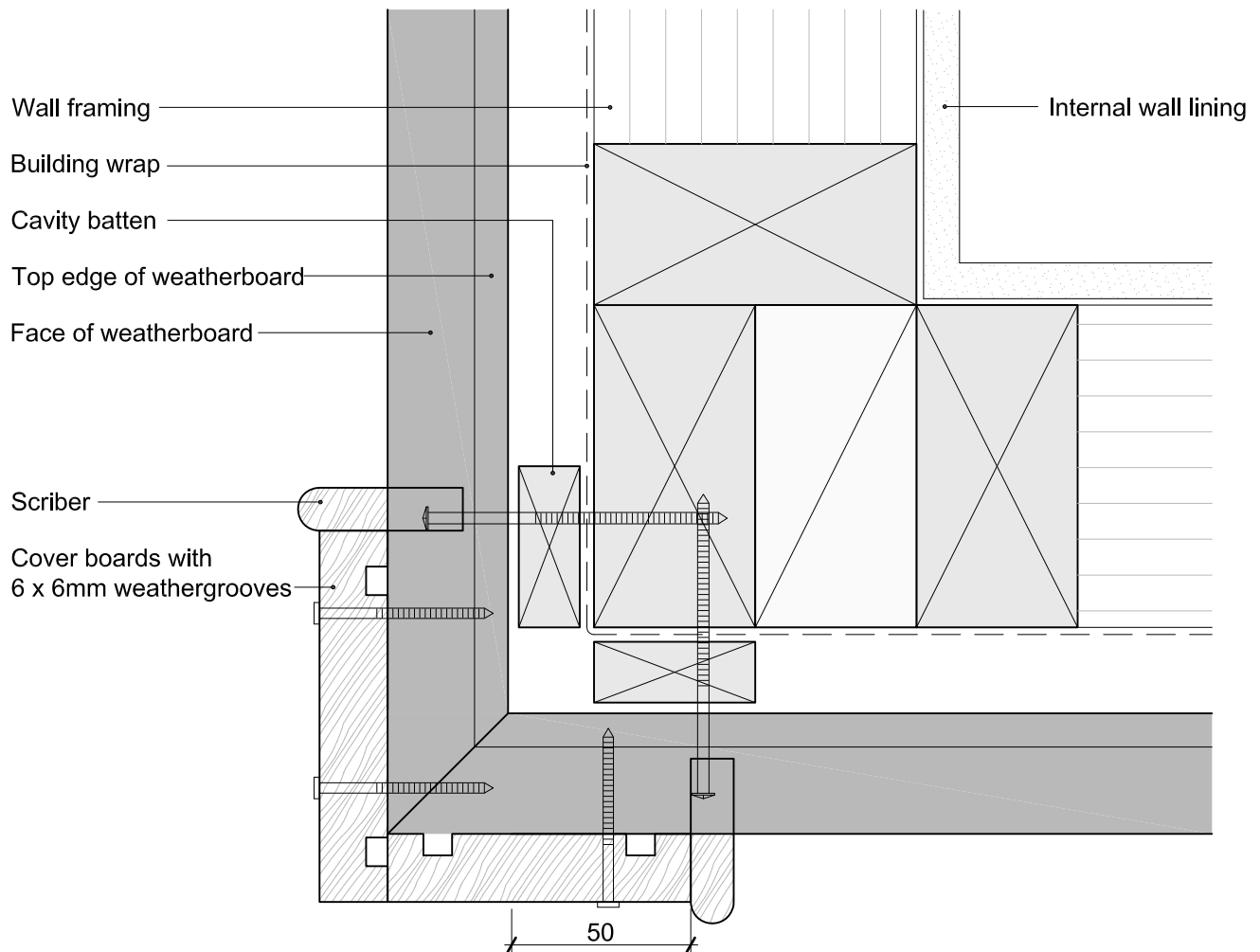
Date
3/10/13



© 2013 Abodo Wood Ltd, PO Box 8961, Symonds St, Auckland 1052
Ph 64 9) 302 9555 Fx 64 9) 302 9550
www.abodo.co.nz

Drawing No.
B.C.F.15

1. Weatherboards must be coated with at least one coat all sides prior to fixing.
2. Fixing points must be pre-drilled minimum 1mm smaller than the fastener.
3. Cut ends and exposed timber must be sealed with an approved coating or end seal.



Bevel Back Weatherboard

External 90° Corner - Boxed

Scale
1:2

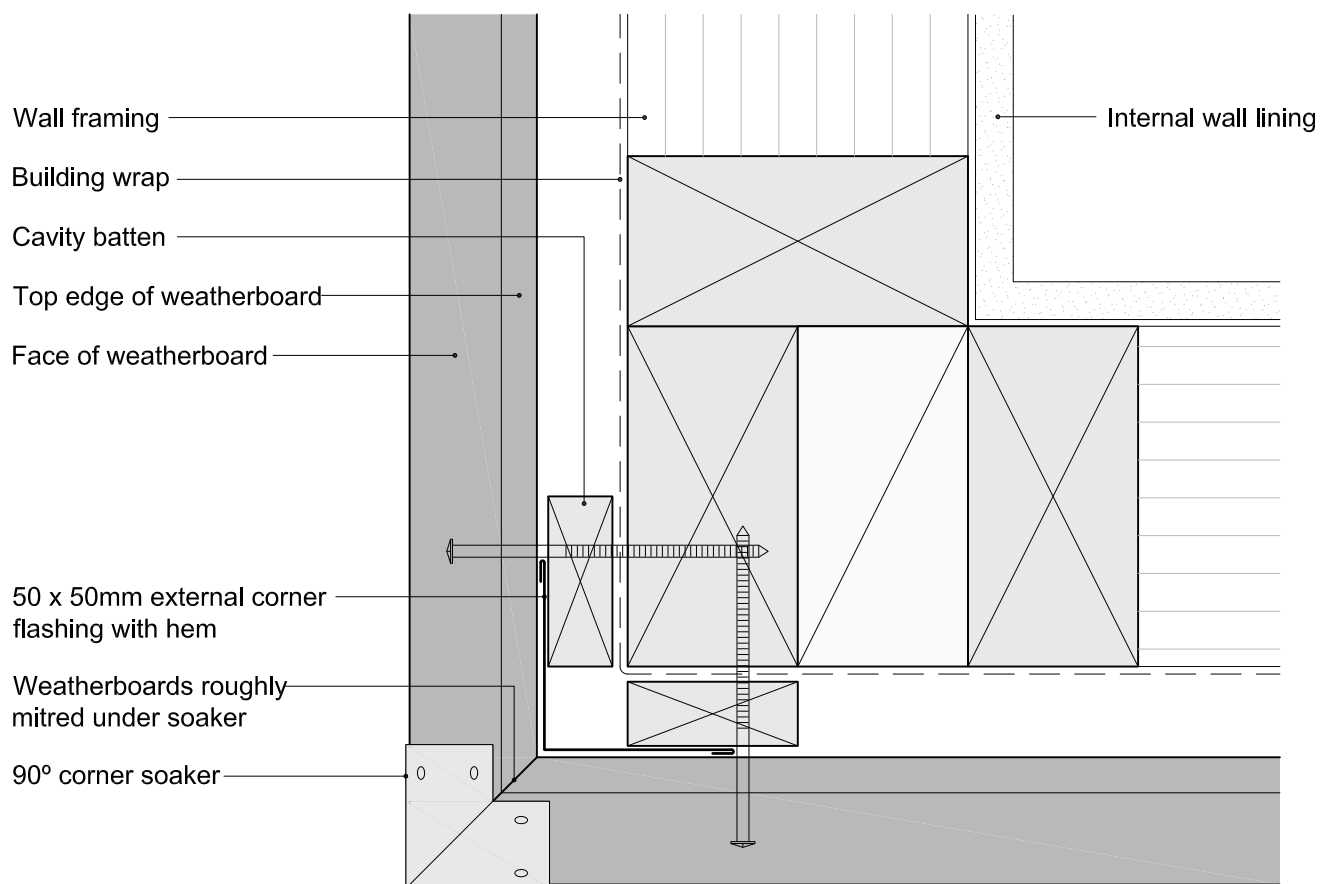
Date
3/10/13



© 2013 Abodo Wood Ltd, PO Box 8961, Symonds St, Auckland 1052
Ph 64 9) 302 9555 Fx 64 9) 302 9550
www.abodo.co.nz

Drawing No.
B.C.F.21

1. Weatherboards must be coated with at least one coat all sides prior to fixing.
2. Fixing points must be pre-drilled minimum 1mm smaller than the fastener.
3. Cut ends and exposed timber must be sealed with an approved coating or end seal.



Bevel Back Weatherboard

External 90° Corner - Soakers

Scale
1:2

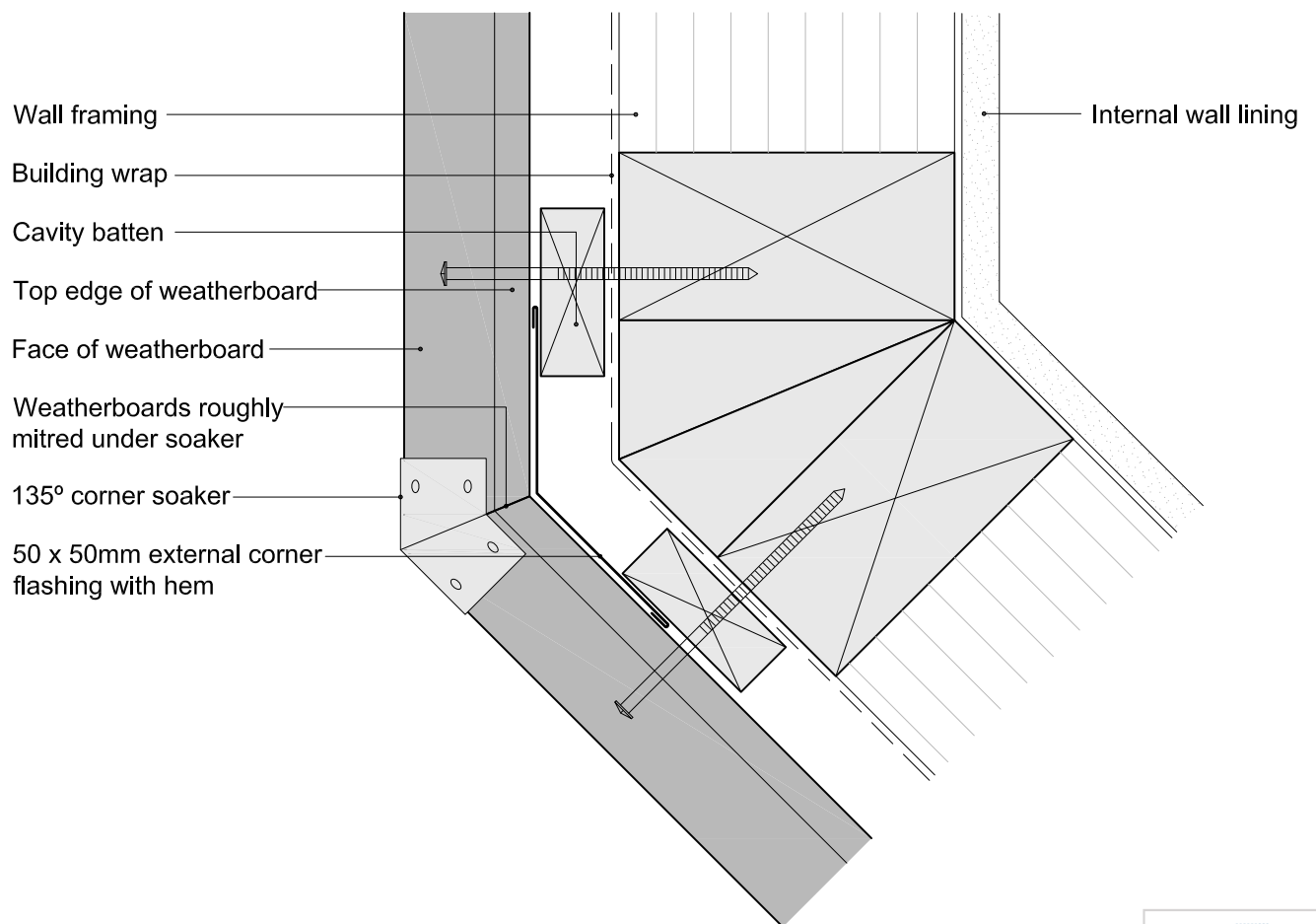
Date
3/10/13



© 2013 Abodo Wood Ltd, PO Box 8961, Symonds St, Auckland 1052
Ph 64 9) 302 9555 Fx 64 9) 302 9550
www.abodo.co.nz

Drawing No.
B.C.F.22

1. Weatherboards must be coated with at least one coat all sides prior to fixing.
2. Fixing points must be pre-drilled minimum 1mm smaller than the fastener.
3. Cut ends and exposed timber must be sealed with an approved coating or end seal.



Bevel Back Weatherboard

External 135° Corner - Soakers

Scale
1:2

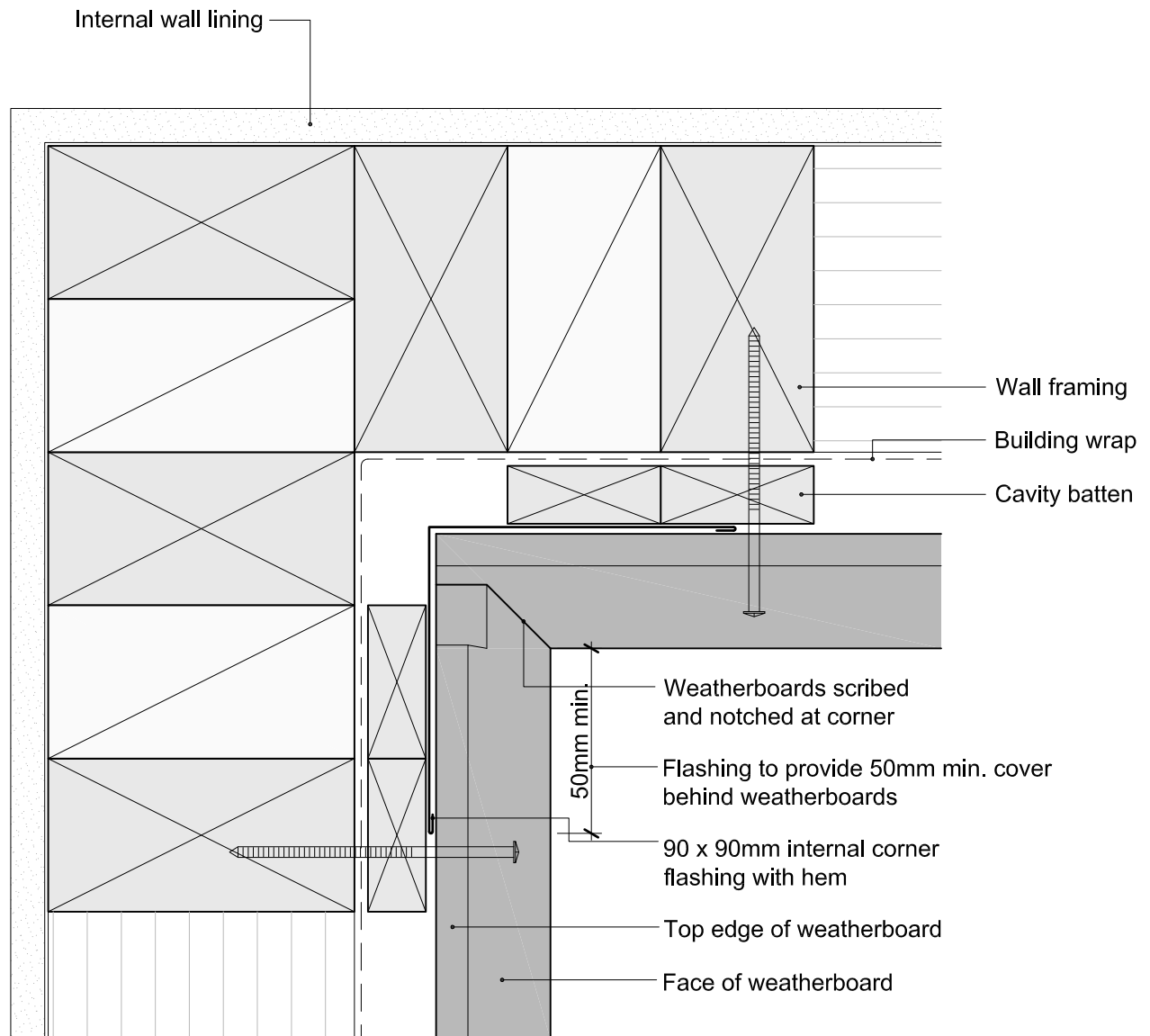
Date
3/10/13



© 2013 Abodo Wood Ltd, PO Box 8961, Symonds St, Auckland 1052
Ph 64 9) 302 9555 Fx 64 9) 302 9550
www.abodo.co.nz

Drawing No.
B.C.F.23

1. Weatherboards must be coated with at least one coat all sides prior to fixing.
2. Fixing points must be pre-drilled minimum 1mm smaller than the fastener.
3. Cut ends and exposed timber must be sealed with an approved coating or end seal.



Bevel Back Weatherboard

Internal 90° Corner - Scribed & Notched

Scale
1:2

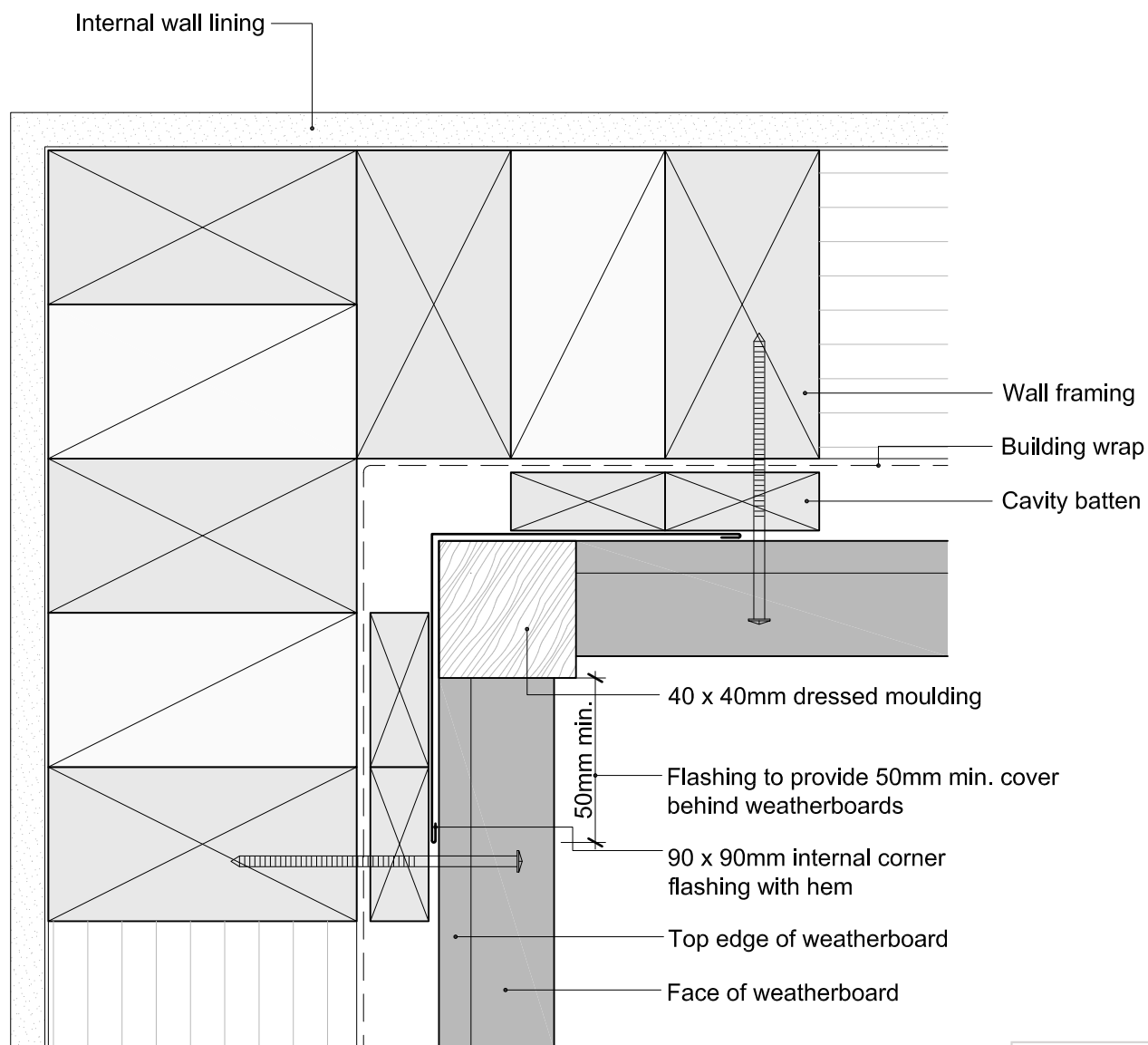
Date
3/10/13



© 2013 Abodo Wood Ltd, PO Box 8961, Symonds St, Auckland 1052
Ph 64 9) 302 9555 Fx 64 9) 302 9550
www.abodo.co.nz

Drawing No.
B.C.F.31

1. Weatherboards must be coated with at least one coat all sides prior to fixing.
2. Fixing points must be pre-drilled minimum 1mm smaller than the fastener.
3. Cut ends and exposed timber must be sealed with an approved coating or end seal.



Bevel Back Weatherboard

Internal 90° Corner - With Moulding

Scale

1:2

Date

3/10/13

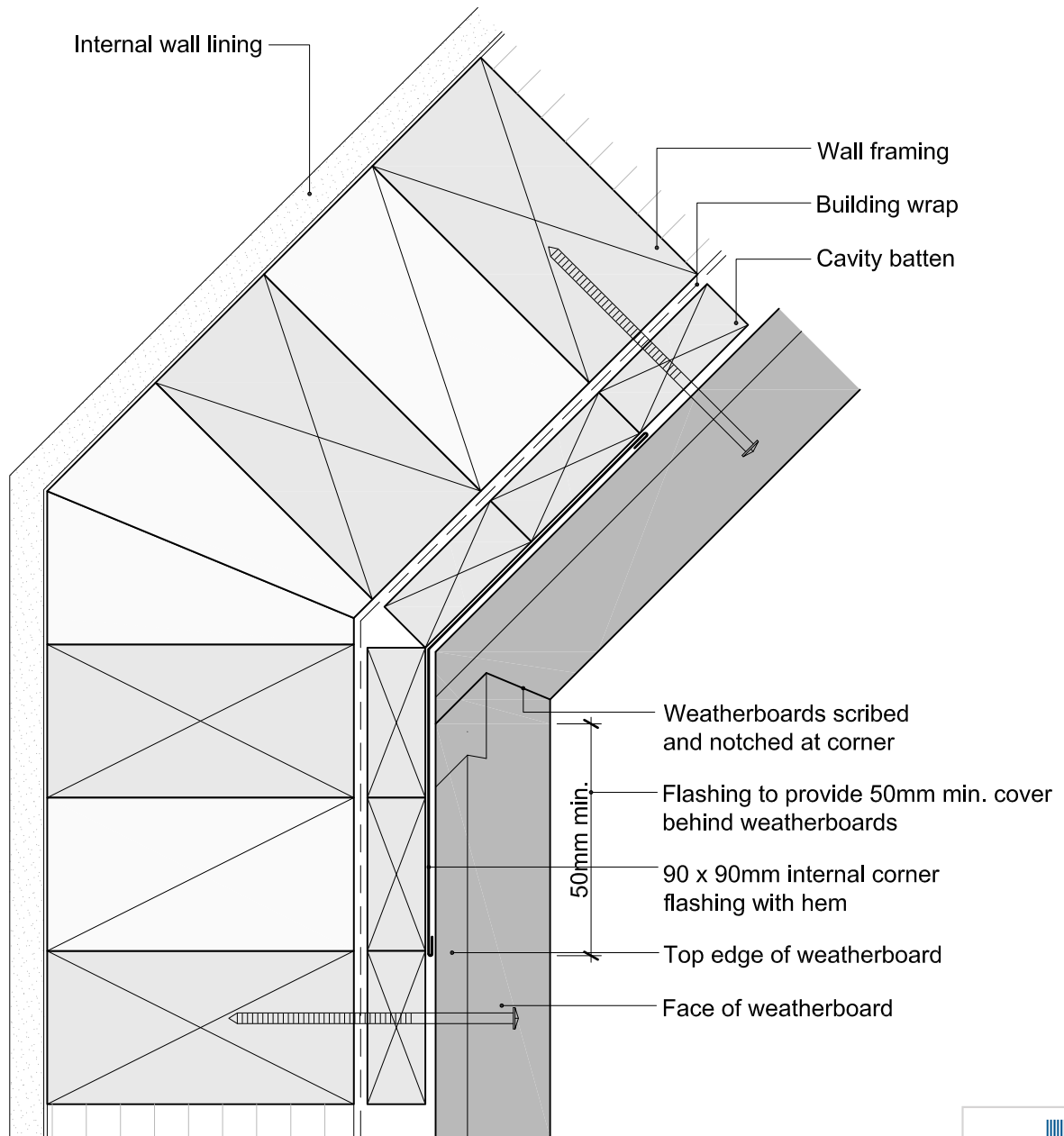


© 2013 Abodo Wood Ltd, PO Box 8961, Symonds St, Auckland 1052
Ph 64 9) 302 9555 Fx 64 9) 302 9550
www.abodo.co.nz

Drawing No.

B.C.F.32

1. Weatherboards must be coated with at least one coat all sides prior to fixing.
2. Fixing points must be pre-drilled minimum 1mm smaller than the fastener.
3. Cut ends and exposed timber must be sealed with an approved coating or end seal.



Bevel Back Weatherboard

Internal 135° Corner - Scribed & Notched

Scale
1:2

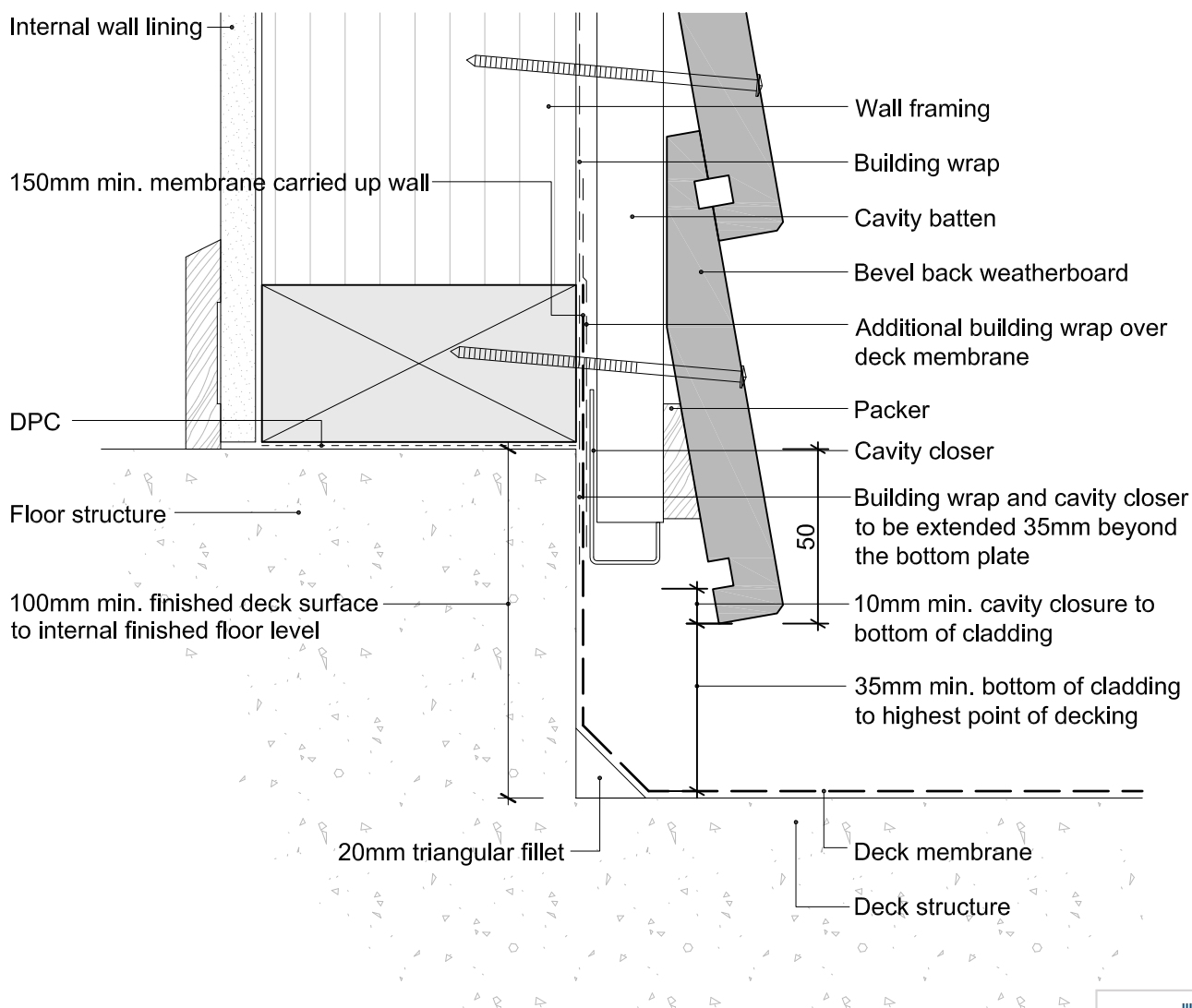
Date
3/10/13




© 2013 Abodo Wood Ltd, PO Box 8961, Symonds St, Auckland 1052
Ph 64 9) 302 9555 Fx 64 9) 302 9550
www.abodo.co.nz

Drawing No.
B.C.F.33

1. Weatherboards must be coated with at least one coat all sides prior to fixing.
2. Fixing points must be pre-drilled minimum 1mm smaller than the fastener.
3. Cut ends and exposed timber must be sealed with an approved coating or end seal.



 CMA-CM40070

Bevel Back Weatherboard

Enclosed Deck - Concrete Substrate

Scale

1:2

Date

04/12/14

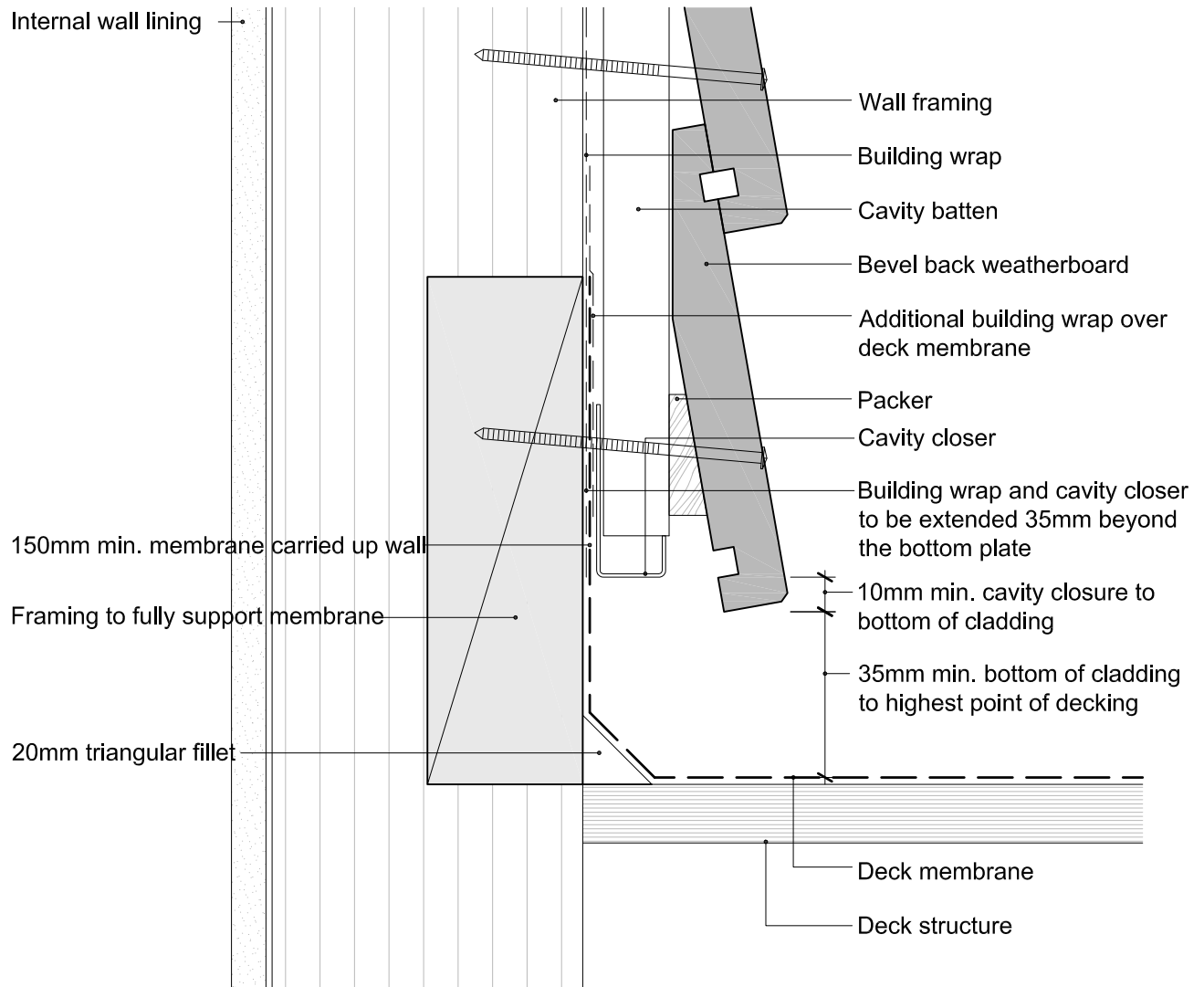



© 2013 Abodo Wood Ltd, PO Box 8961, Symonds St, Auckland 1052
Ph 64 9) 302 9555 Fx 64 9) 302 9550
www.abodo.co.nz

Drawing No.

B.C.F.41

1. Weatherboards must be coated with at least one coat all sides prior to fixing.
2. Fixing points must be pre-drilled minimum 1mm smaller than the fastener.
3. Cut ends and exposed timber must be sealed with an approved coating or end seal.



 CMA-CM40070

Bevel Back Weatherboard

Enclosed Deck - Timber Substrate

Scale

1:2

Date

04/12/14

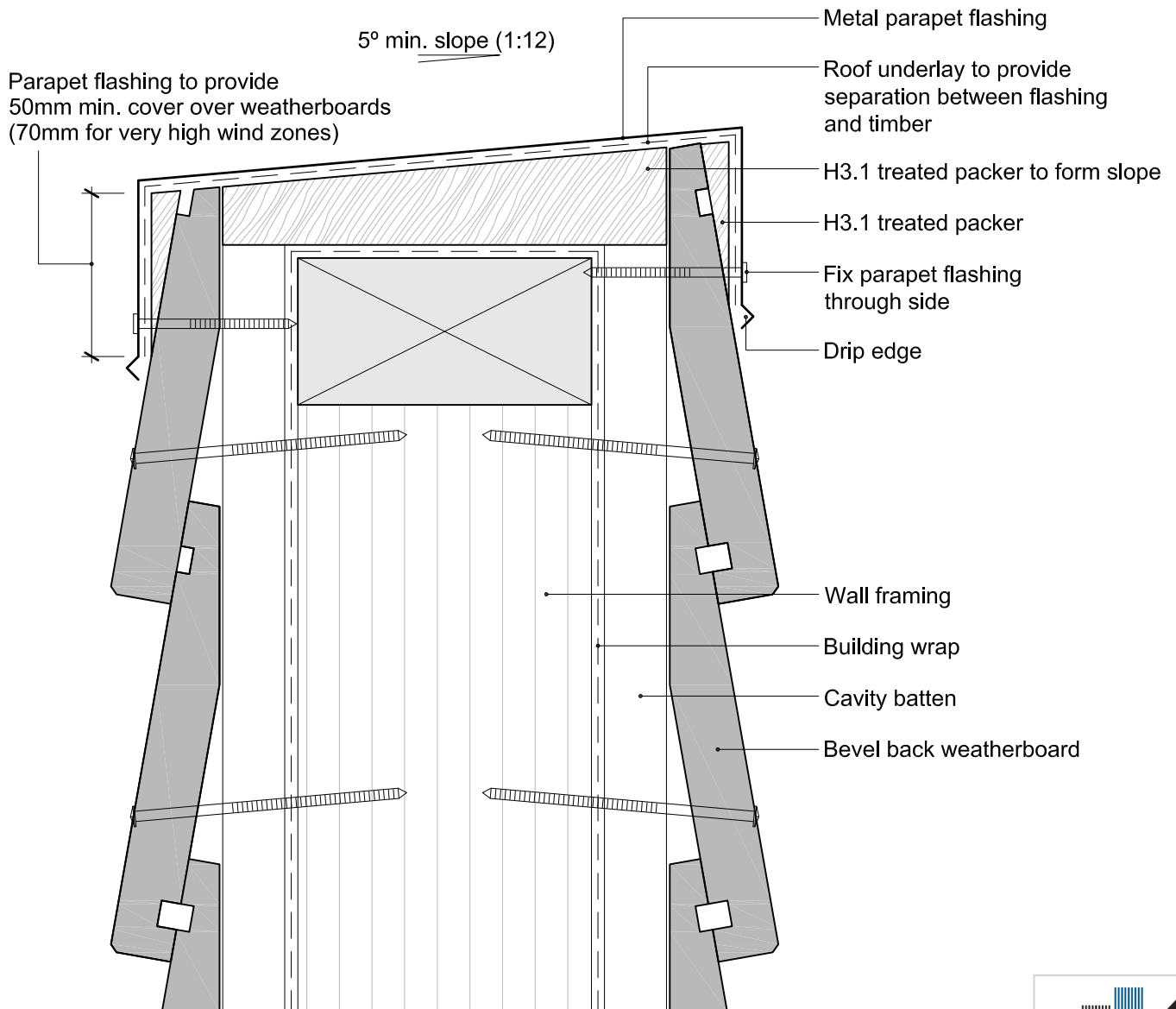


© 2013 Abodo Wood Ltd, PO Box 8961, Symonds St, Auckland 1052
Ph 64 9) 302 9555 Fx 64 9) 302 9550
www.abodo.co.nz

Drawing No.

B.C.F.42

1. Weatherboards must be coated with at least one coat all sides prior to fixing.
2. Fixing points must be pre-drilled minimum 1mm smaller than the fastener.
3. Cut ends and exposed timber must be sealed with an approved coating or end seal.



Bevel Back Weatherboard

Parapet Balustrade Cap Flashing

Scale
1:2

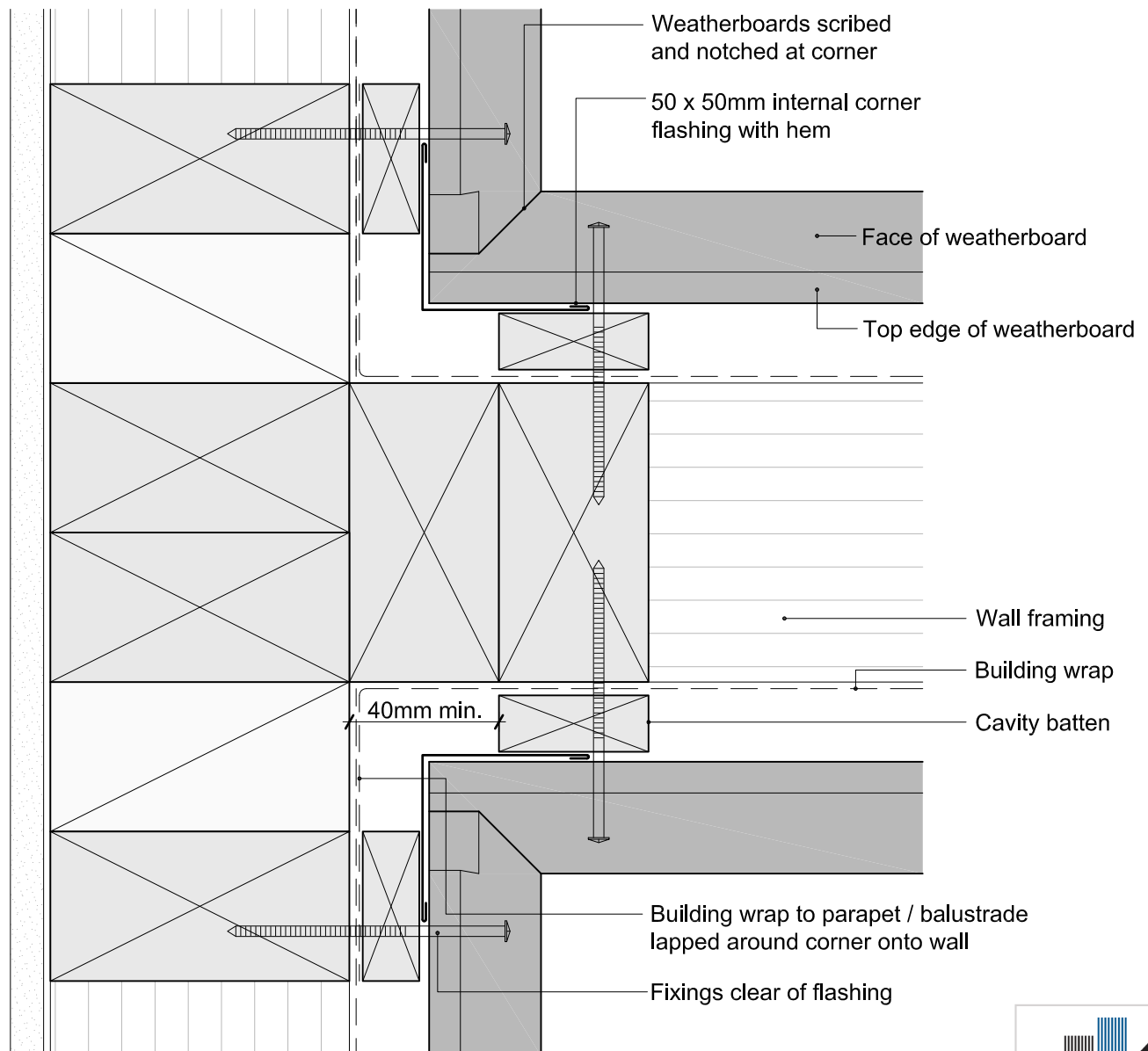
Date
3/10/13



© 2013 Abodo Wood Ltd, PO Box 8961, Symonds St, Auckland 1052
Ph 64 9) 302 9555 Fx 64 9) 302 9550
www.abodo.co.nz

Drawing No.
B.C.F.43

1. Weatherboards must be coated with at least one coat all sides prior to fixing.
2. Fixing points must be pre-drilled minimum 1mm smaller than the fastener.
3. Cut ends and exposed timber must be sealed with an approved coating or end seal.



Bevel Back Weatherboard

Parapet Balustrade Intersection With Wall

Scale
1:2

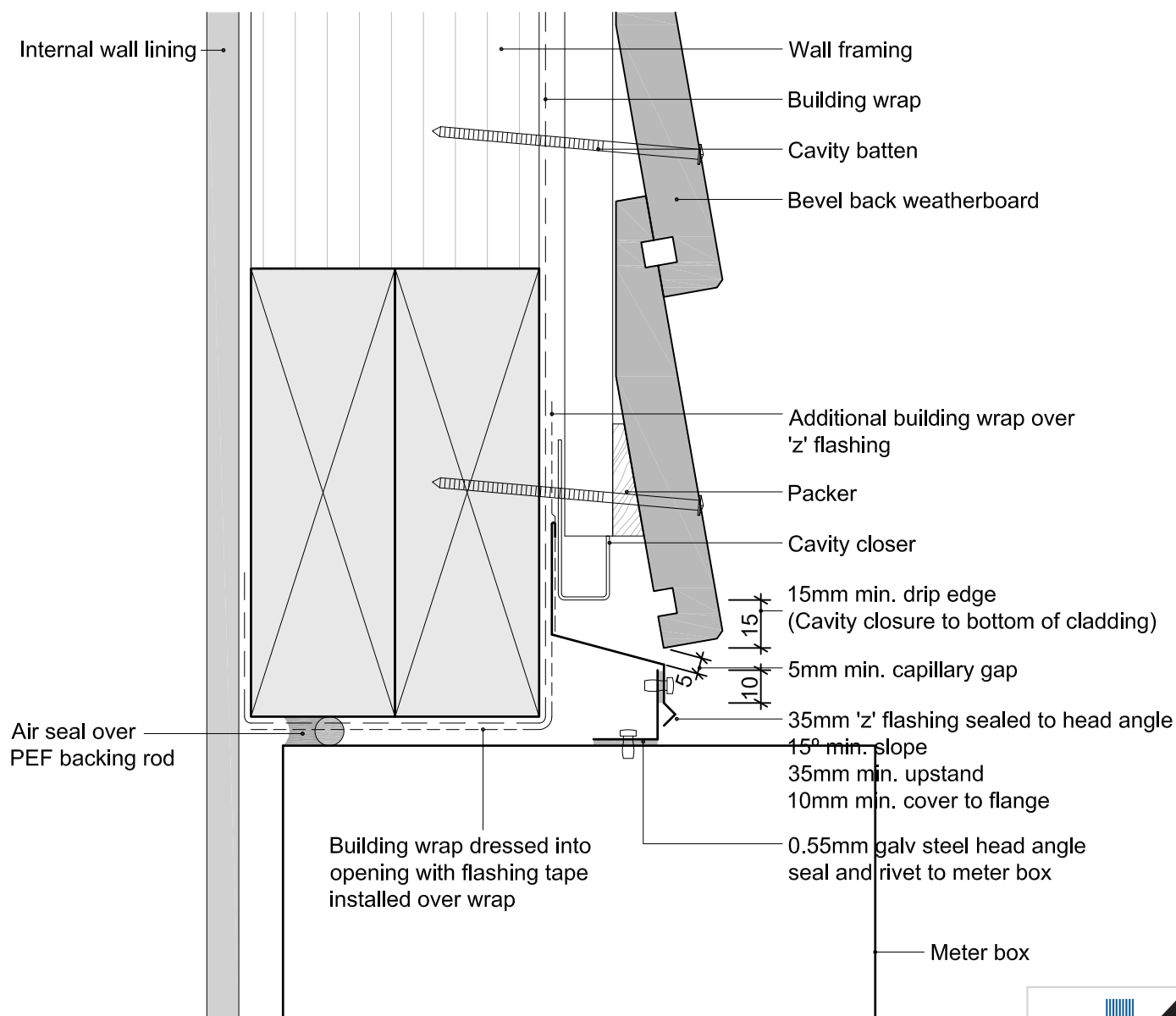
Date
3/10/13



© 2013 Abodo Wood Ltd, PO Box 8961, Symonds St, Auckland 1052
Ph 64 9) 302 9555 Fx 64 9) 302 9550
www.abodo.co.nz

Drawing No.
B.C.F.44

1. Weatherboards must be coated with at least one coat all sides prior to fixing.
2. Fixing points must be pre-drilled minimum 1mm smaller than the fastener.
3. Cut ends and exposed timber must be sealed with an approved coating or end seal.



Bevel Back Weatherboard

Meter Box Head

Scale
1:2

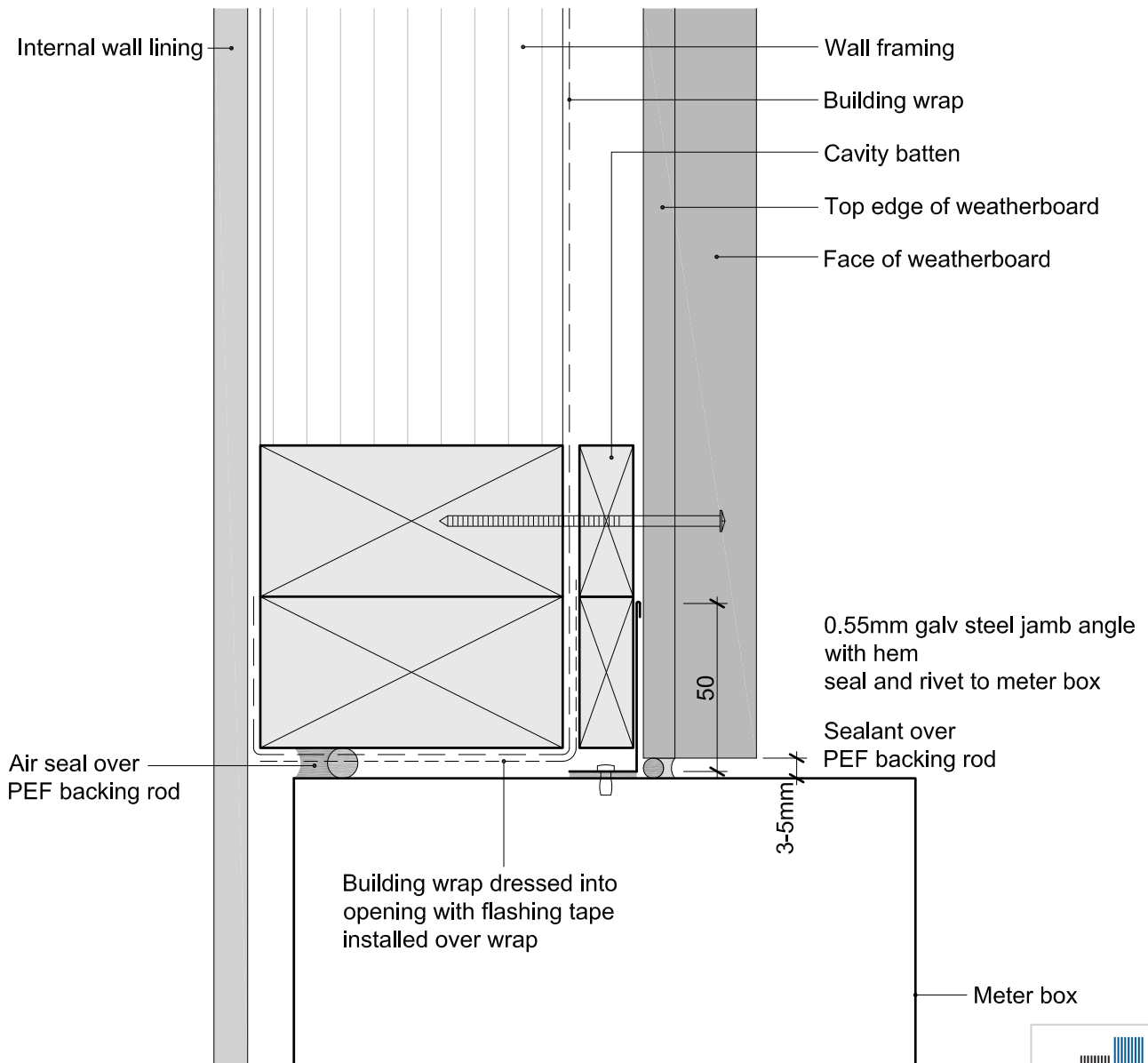
Date
24/09/14



© 2013 Abodo Wood Ltd, PO Box 8961, Symonds St, Auckland 1052
Ph 64 9) 302 9555 Fx 64 9) 302 9550
www.abodo.co.nz

Drawing No.
B.C.F.51

1. Weatherboards must be coated with at least one coat all sides prior to fixing.
2. Fixing points must be pre-drilled minimum 1mm smaller than the fastener.
3. Cut ends and exposed timber must be sealed with an approved coating or end seal.



Bevel Back Weatherboard

Meter Box Jamb

Scale
1:2

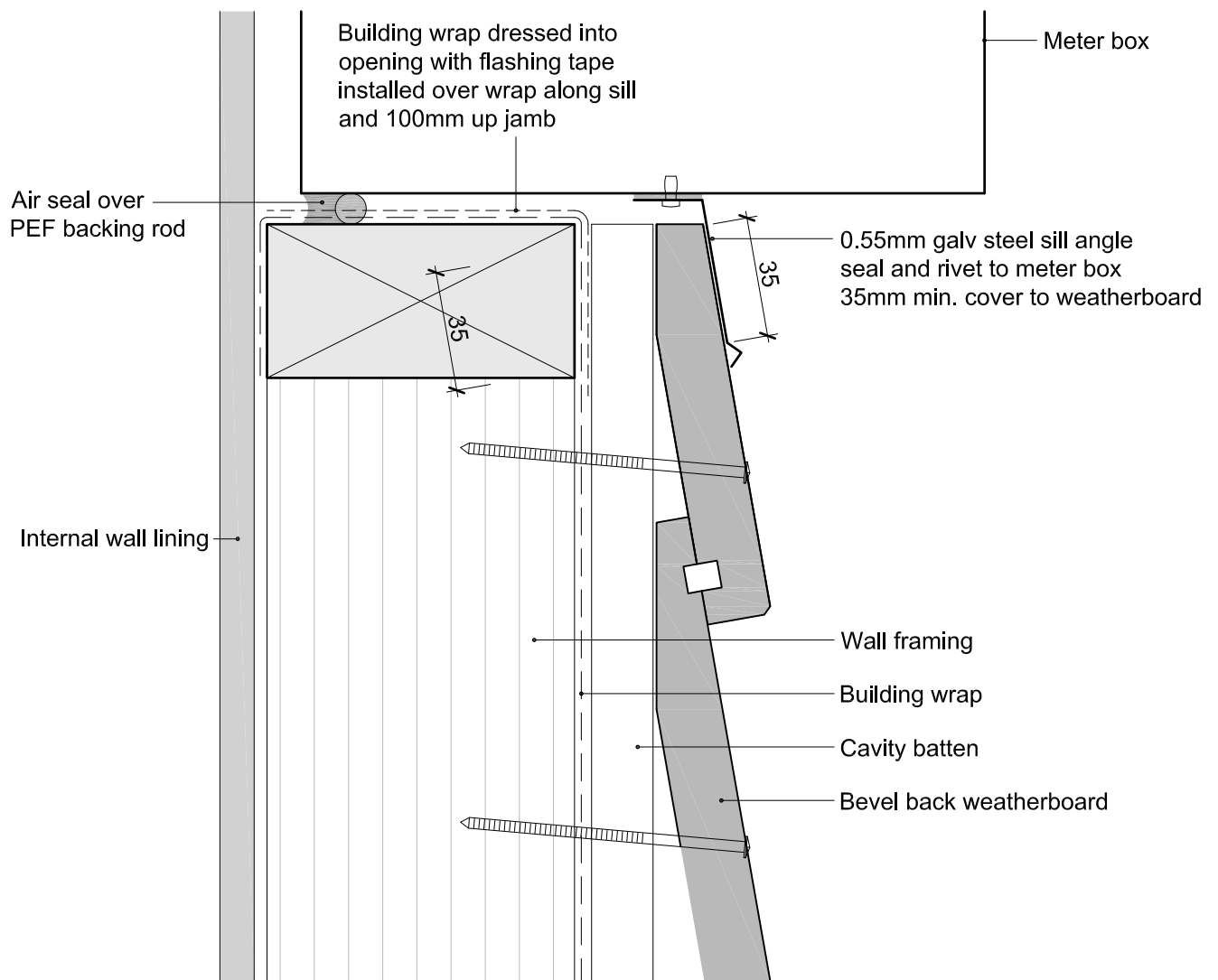
Date
3/10/13



© 2013 Abodo Wood Ltd, PO Box 8961, Symonds St, Auckland 1052
Ph 64 9) 302 9555 Fx 64 9) 302 9550
www.abodo.co.nz

Drawing No.
B.C.F.52

1. Weatherboards must be coated with at least one coat all sides prior to fixing.
2. Fixing points must be pre-drilled minimum 1mm smaller than the fastener.
3. Cut ends and exposed timber must be sealed with an approved coating or end seal.



Bevel Back Weatherboard

Meter Box Sill

Scale
1:2

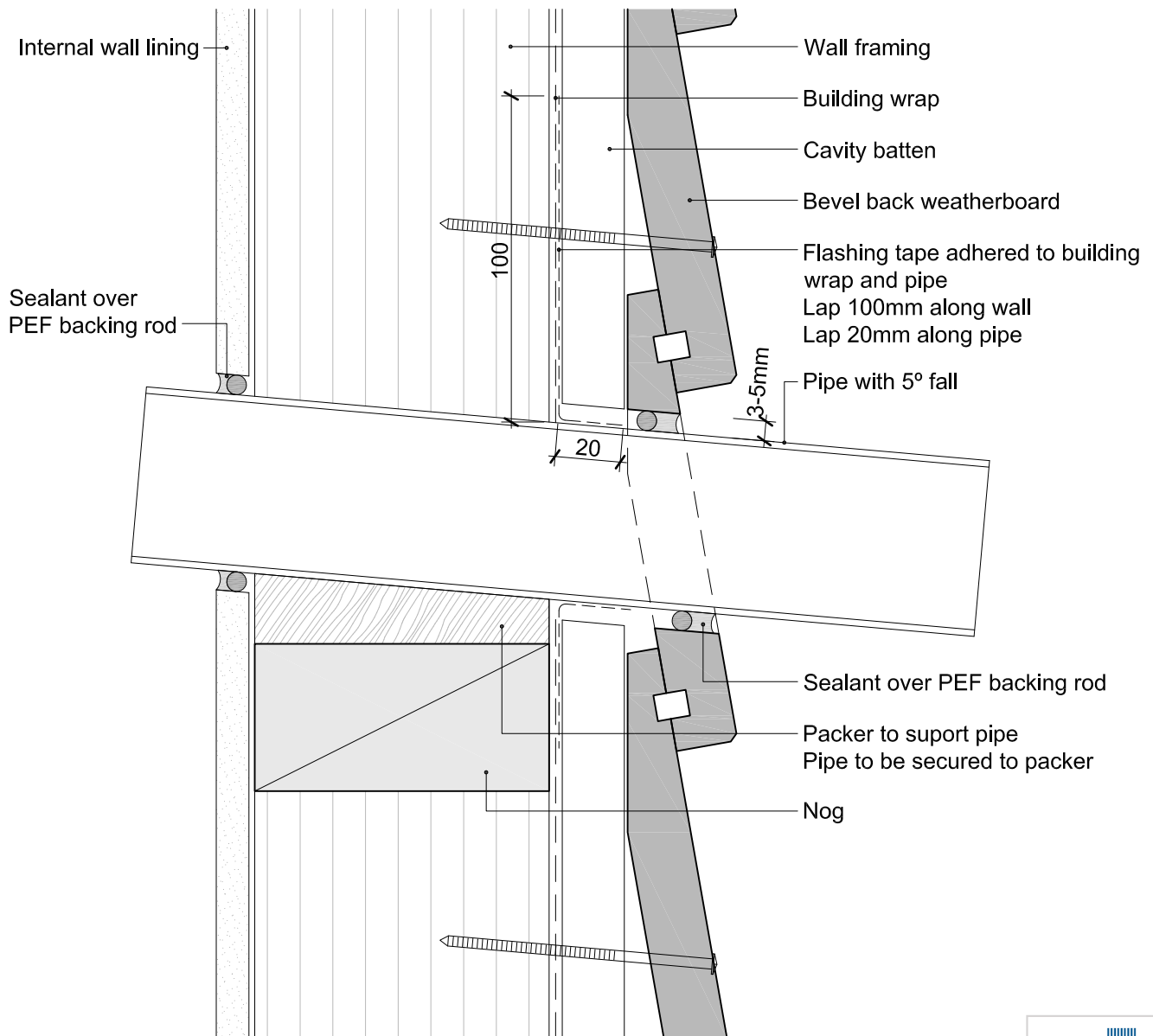
Date
3/10/13



© 2013 Abodo Wood Ltd, PO Box 8961, Symonds St, Auckland 1052
Ph 64 9) 302 9555 Fx 64 9) 302 9550
www.abodo.co.nz

Drawing No.
B.C.F.53

1. Weatherboards must be coated with at least one coat all sides prior to fixing.
2. Fixing points must be pre-drilled minimum 1mm smaller than the fastener.
3. Cut ends and exposed timber must be sealed with an approved coating or end seal.



Bevel Back Weatherboard

Pipe Penetration

Scale
1:2

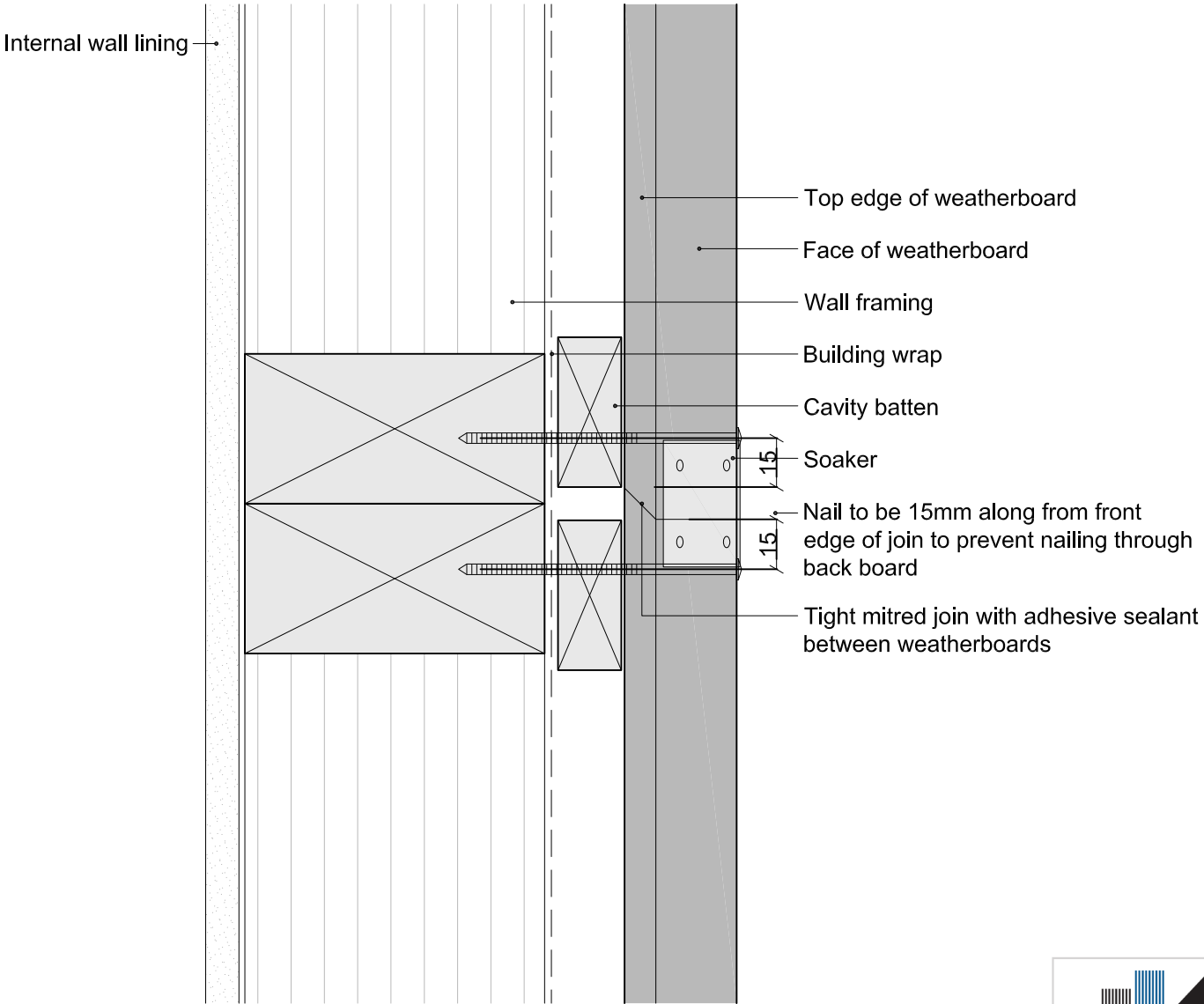
Date
3/10/13



© 2013 Abodo Wood Ltd, PO Box 8961, Symonds St, Auckland 1052
Ph 64 9) 302 9555 Fx 64 9) 302 9550
www.abodo.co.nz

Drawing No.
B.C.F.54

1. Weatherboards must be coated with at least one coat all sides prior to fixing.
2. Fixing points must be pre-drilled minimum 1mm smaller than the fastener.
3. Cut ends and exposed timber must be sealed with an approved coating or end seal.



Bevel Back Weatherboard
Weatherboard Join

Scale
1:2

Date
3/10/13

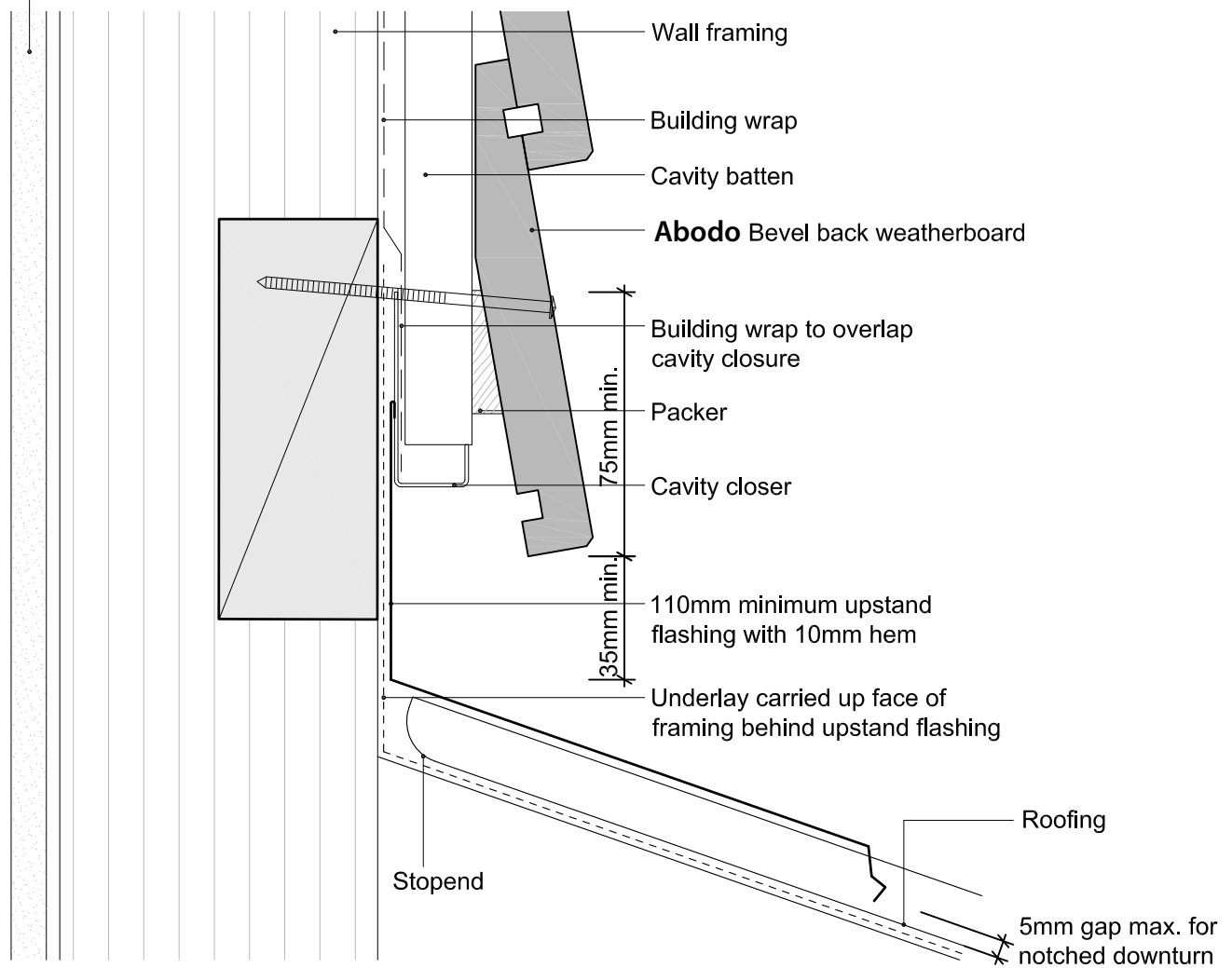


© 2013 Abodo Wood Ltd, PO Box 8961, Symonds St, Auckland 1052
Ph 64 9) 302 9555 Fx 64 9) 302 9550
www.abodo.co.nz

Drawing No.
B.C.F.55

1. Weatherboards must be coated with at least one coat all sides prior to fixing.
2. Fixing points must be pre-drilled minimum 1mm smaller than the fastener.
3. Cut ends and exposed timber must be sealed with an approved coating or end seal.

Internal wall lining



Note: refer to NZBC E2/AS1 Table 7 for apron flashing cover over roofing



CMA-CM40070

Bevel Back Weatherboard

Apron Flashing

Scale
1:2

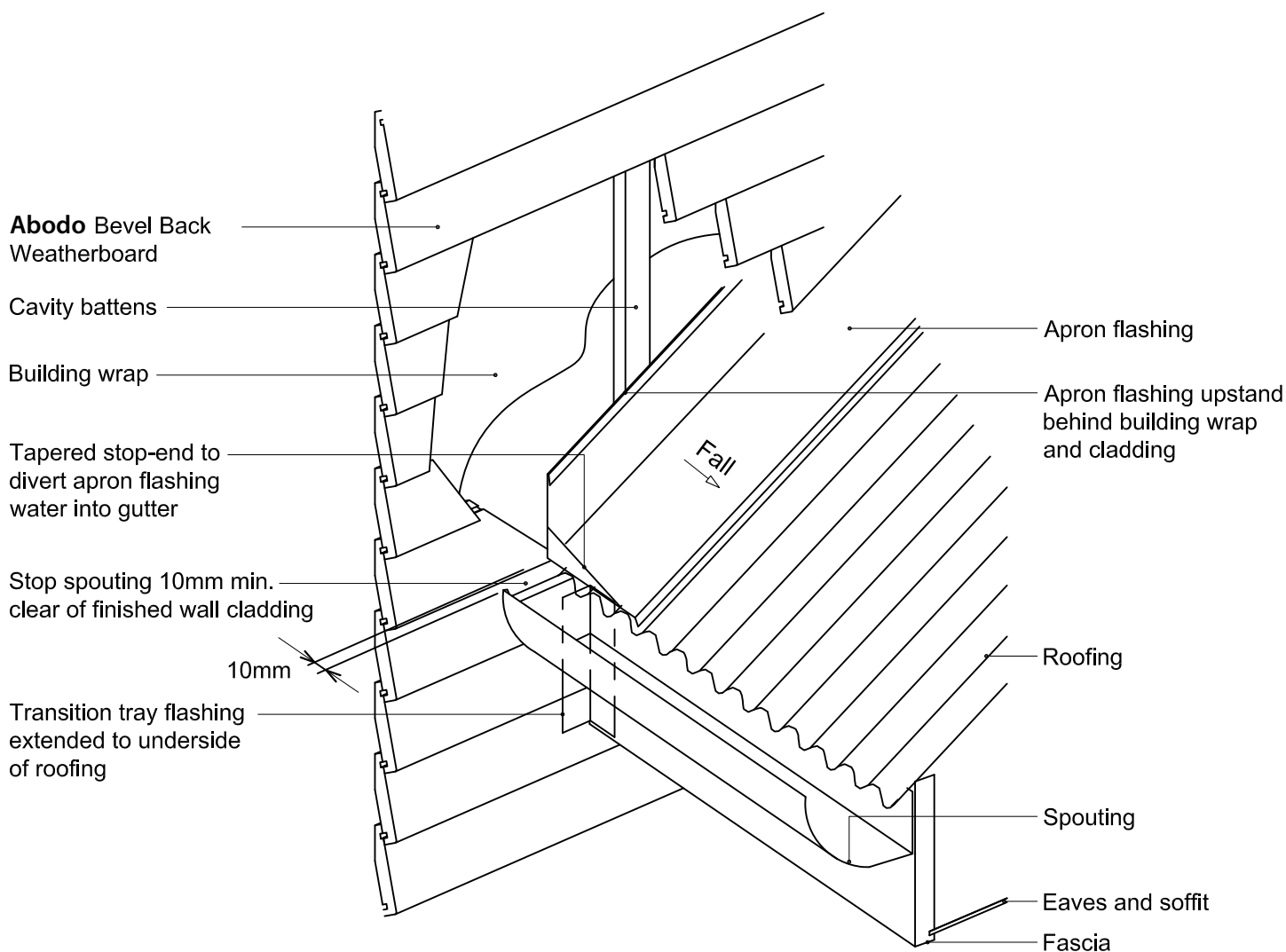
Date
30/07/14



© 2013 Abodo Wood Ltd, PO Box 8961, Symonds St, Auckland 1052
Ph 64 9) 302 9555 Fx 64 9) 302 9550
www.abodo.co.nz

Drawing No.
B.C.F.57

1. Weatherboards must be coated with at least one coat all sides prior to fixing.
2. Fixing points must be pre-drilled minimum 1mm smaller than the fastener.
3. Cut ends and exposed timber must be sealed with an approved coating or end seal.



Note: refer to NZBC E2/AS1 Table 7 for apron flashing cover over roofing



Bevel Back Weatherboard

Roof Kick-out Flashing Cavity Detail

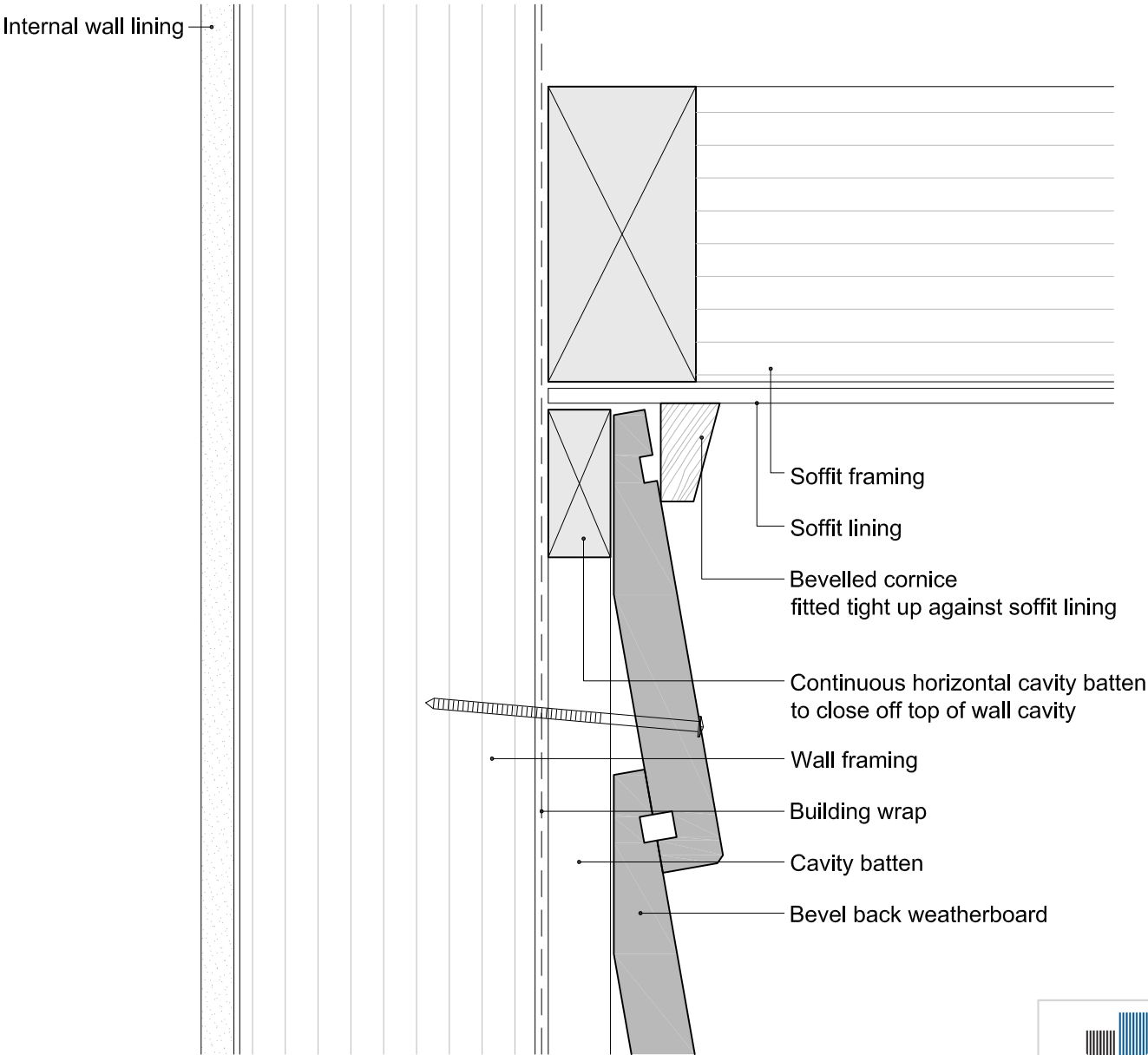
Date
30/07/14



© 2013 Abodo Wood Ltd, PO Box 8961, Symonds St, Auckland 1052
Ph 64 9) 302 9555 Fx 64 9) 302 9550
www.abodo.co.nz

Drawing No.
B.C.F.58

1. Weatherboards must be coated with at least one coat all sides prior to fixing.
2. Fixing points must be pre-drilled minimum 1mm smaller than the fastener.
3. Cut ends and exposed timber must be sealed with an approved coating or end seal.

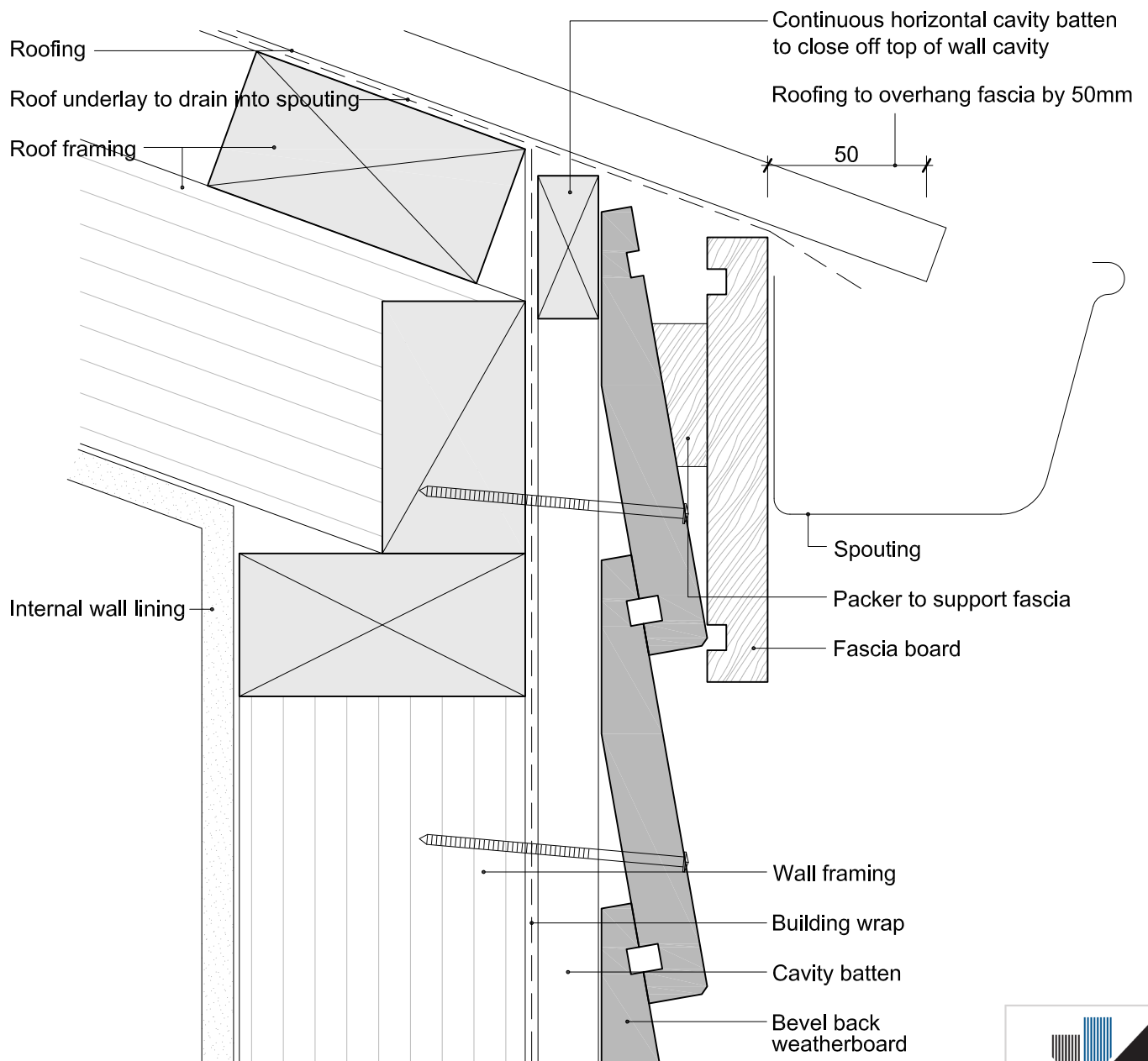


Bevel Back Weatherboard
Top Of Wall - Flat Soffit

Scale
1:2

Date
3/10/13

1. Weatherboards must be coated with at least one coat all sides prior to fixing.
2. Fixing points must be pre-drilled minimum 1mm smaller than the fastener.
3. Cut ends and exposed timber must be sealed with an approved coating or end seal.



Bevel Back Weatherboard

Top Of Wall No Soffit

Scale
1:2

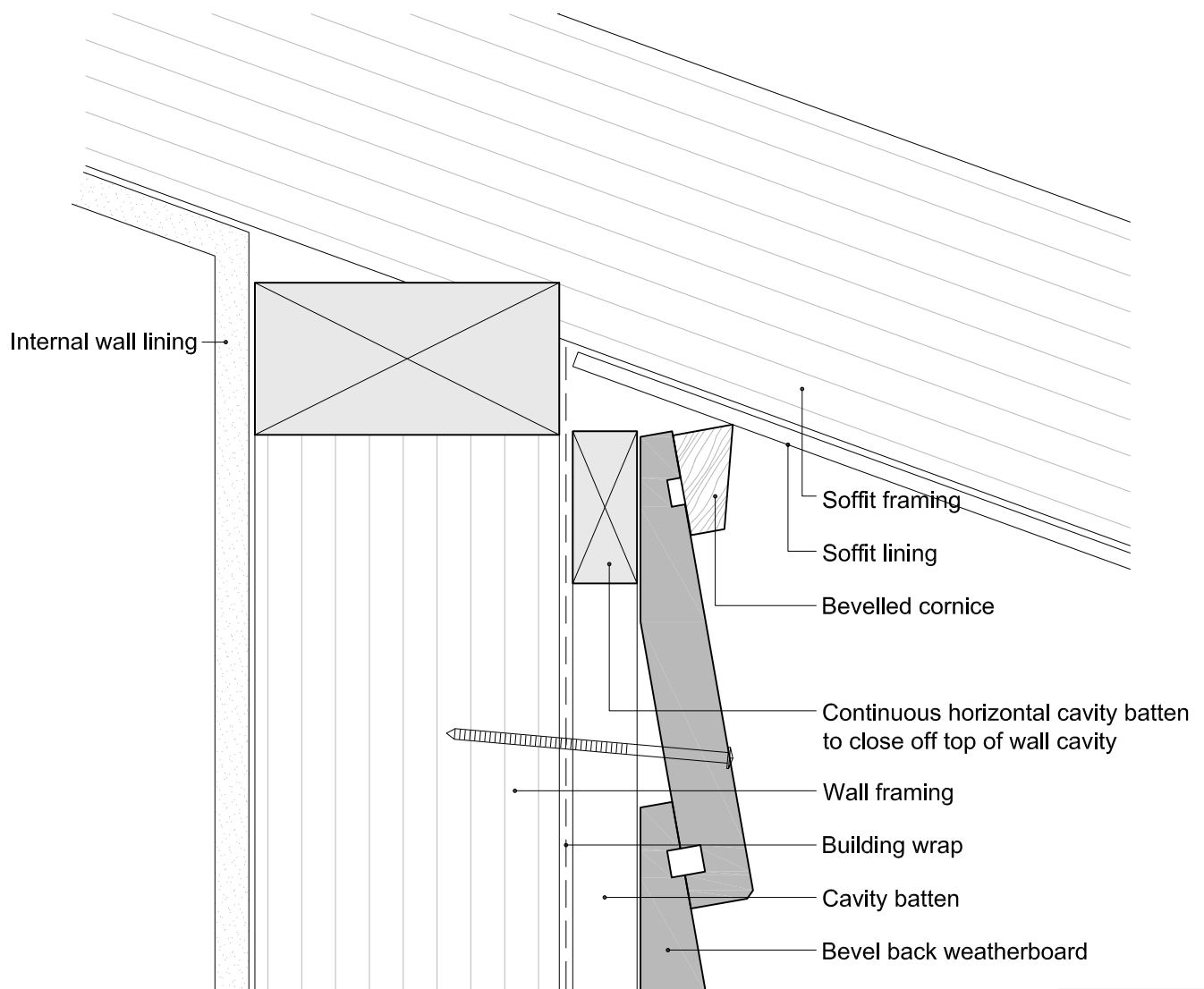
Date
3/10/13



© 2013 Abodo Wood Ltd, PO Box 8961, Symonds St, Auckland 1052
Ph 64 9) 302 9555 Fx 64 9) 302 9550
www.abodo.co.nz

Drawing No.
B.C.F.62

1. Weatherboards must be coated with at least one coat all sides prior to fixing.
2. Fixing points must be pre-drilled minimum 1mm smaller than the fastener.
3. Cut ends and exposed timber must be sealed with an approved coating or end seal.



Bevel Back Weatherboard

Top Of Wall - Sloping Soffit

Scale
1:2

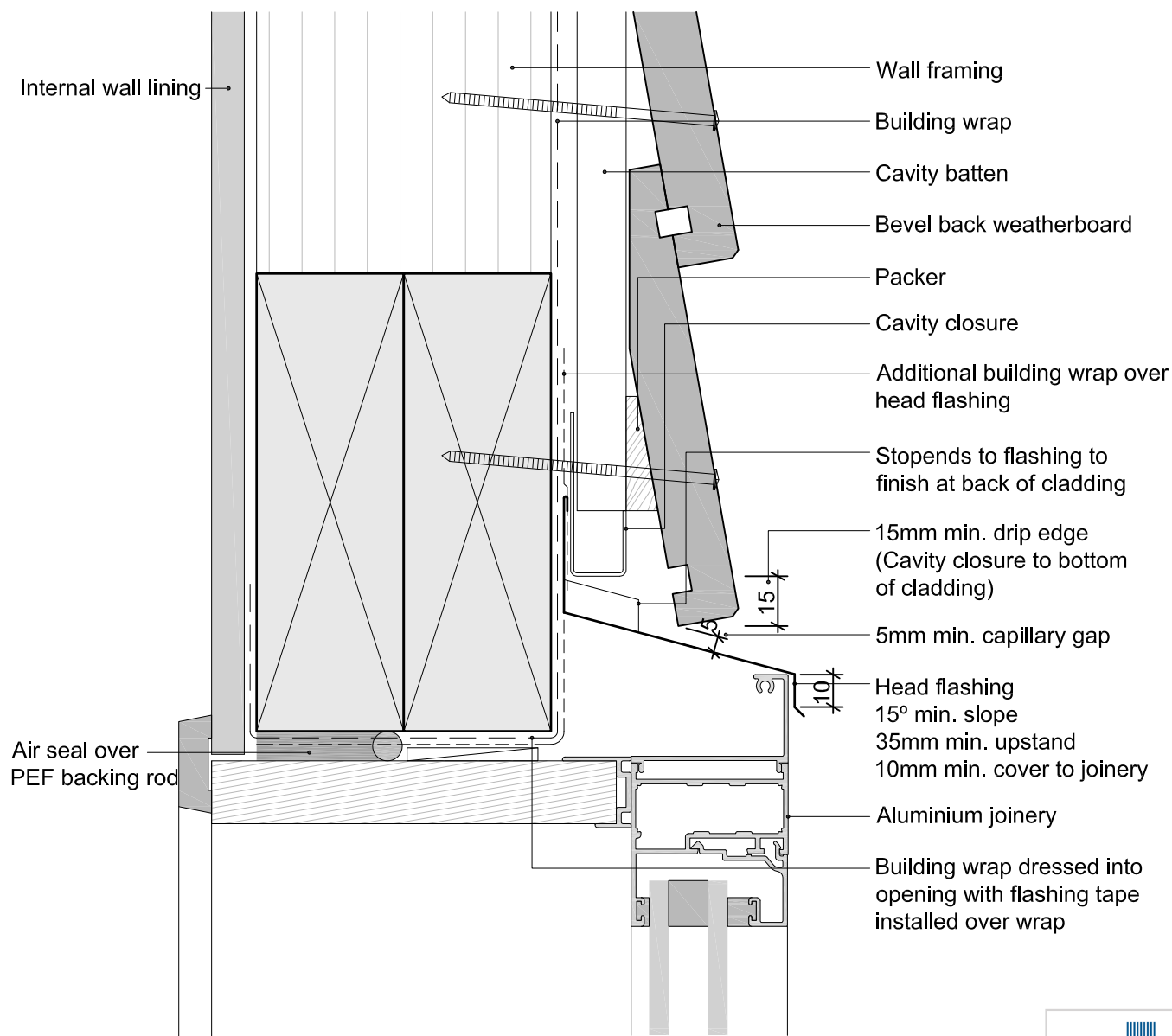
Date
3/10/13



© 2013 Abodo Wood Ltd, PO Box 8961, Symonds St, Auckland 1052
Ph 64 9) 302 9555 Fx 64 9) 302 9550
www.abodo.co.nz

Drawing No.
B.C.F.63

1. Weatherboards must be coated with at least one coat all sides prior to fixing.
2. Fixing points must be pre-drilled minimum 1mm smaller than the fastener.
3. Cut ends and exposed timber must be sealed with an approved coating or end seal.



Bevel Back Weatherboard

Window Head

Scale

1:2

Date

24/09/14

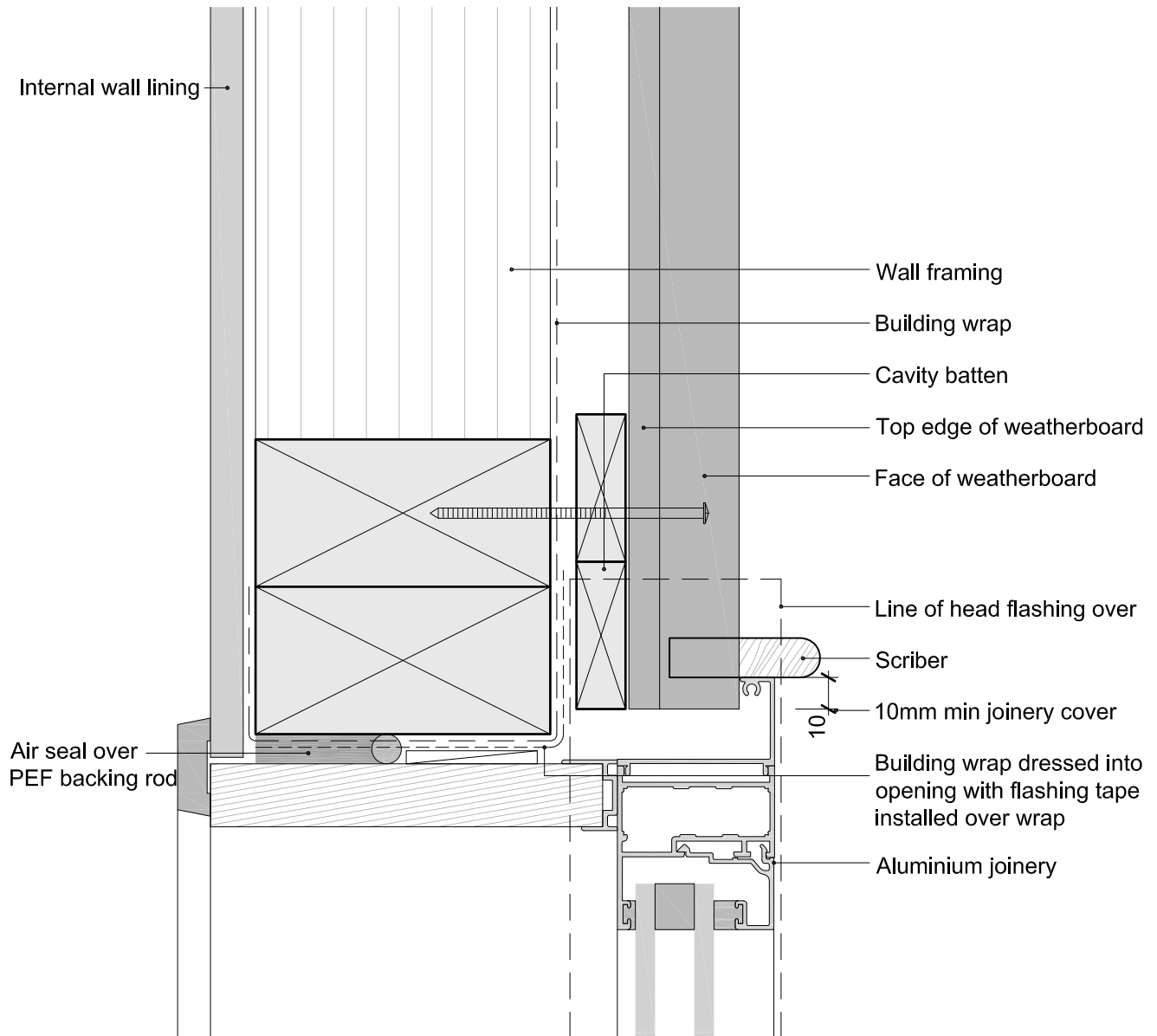


© 2013 Abodo Wood Ltd, PO Box 8961, Symonds St, Auckland 1052
Ph 64 9) 302 9555 Fx 64 9) 302 9550
www.abodo.co.nz

Drawing No.

B.C.F.71

1. Weatherboards must be coated with at least one coat all sides prior to fixing.
2. Fixing points must be pre-drilled minimum 1mm smaller than the fastener.
3. Cut ends and exposed timber must be sealed with an approved coating or end seal.



Bevel Back Weatherboard

Window Jamb

Scale
1:2

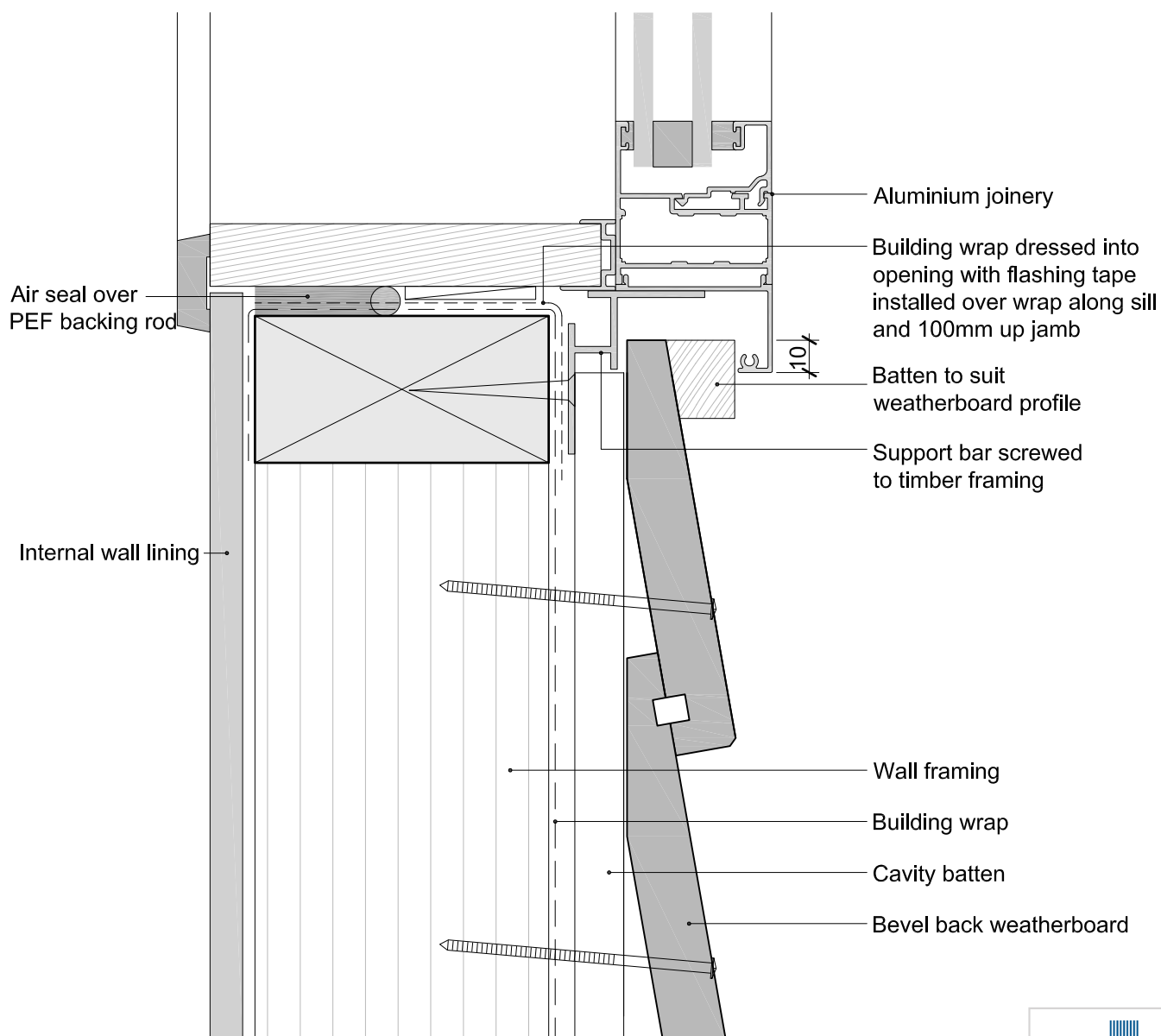
Date
3/10/13



© 2013 Abodo Wood Ltd, PO Box 8961, Symonds St, Auckland 1052
Ph 64 9) 302 9555 Fx 64 9) 302 9550
www.abodo.co.nz

Drawing No.
B.C.F.72

1. Weatherboards must be coated with at least one coat all sides prior to fixing.
2. Fixing points must be pre-drilled minimum 1mm smaller than the fastener.
3. Cut ends and exposed timber must be sealed with an approved coating or end seal.



Bevel Back Weatherboard

Window Sill

Scale
1:2

Date
3/10/13



© 2013 Abodo Wood Ltd, PO Box 8961, Symonds St, Auckland 1052
Ph 64 9) 302 9555 Fx 64 9) 302 9550
www.abodo.co.nz

Drawing No.
B.C.F.73